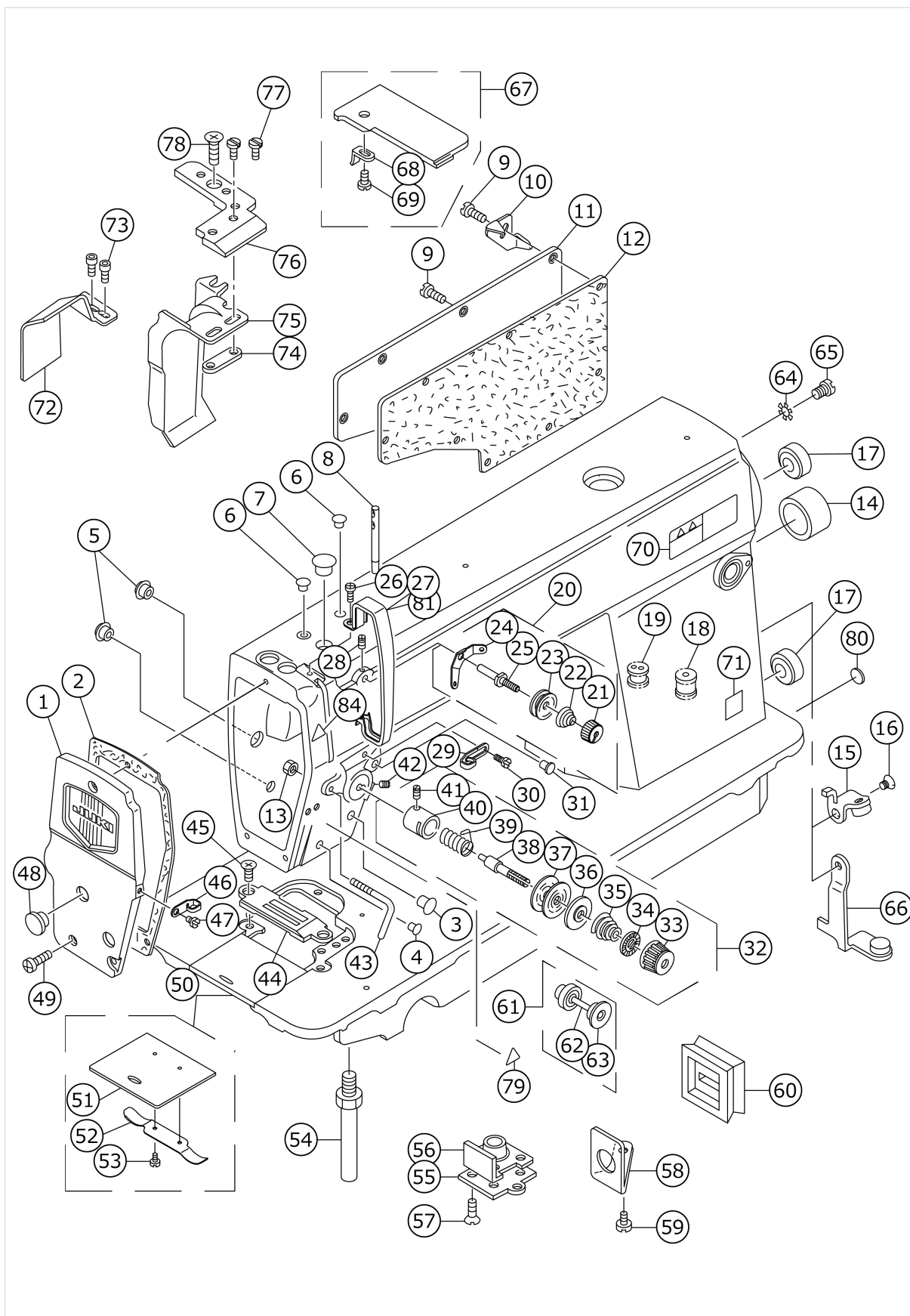


# DMN-5420N-7

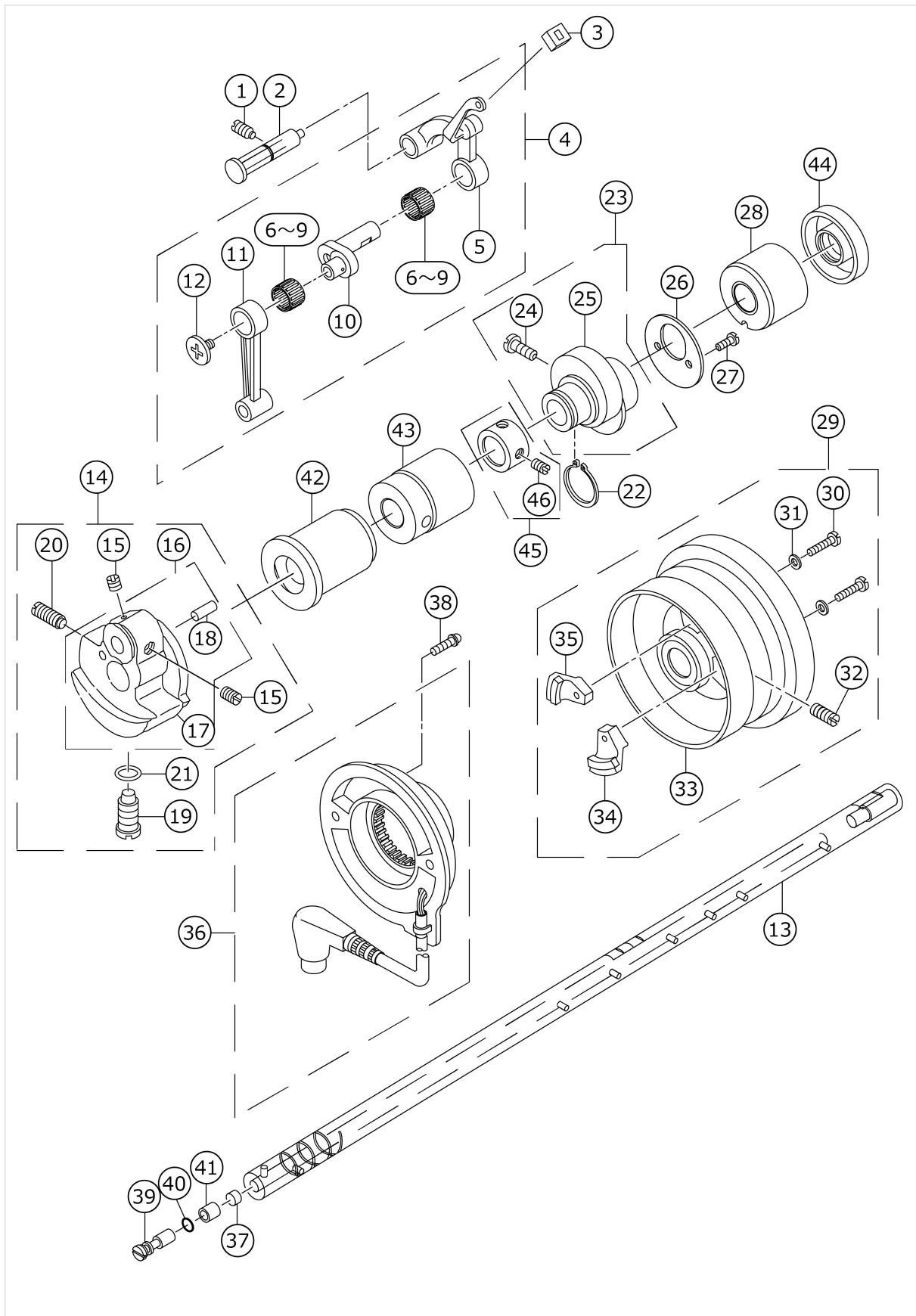
## MACHINE FRAME & MISCELLANEOUS COVER COMPONENTS



No.	品番	品名	備考	子部品	消耗品	個数
1	11325750	FACE PLATE ASM.				1.00
2	11300506	FACE PLATE GASKET				1.00
3	TA1250504R0	RUBBER PLUG				1.00
4	TA0850604R0	RUBBER PLUG				1.00
5	TA1250504R0	RUBBER PLUG				2.00
6	TA0850604R0	RUBBER PLUG				2.00
7	TA1250705R0	RUBBER PLUG				1.00
8	22958300	NEEDLE THREAD GUIDE PIN				1.00
9	SS4120915SP	SCREW 3/16-28 L=9				8.00
10	11102605	CORD HOLDER	FOR DMN-5420N-7-0B,-WB			1.00
11	22900401	WINDOW PLATE				1.00
12	11003308	GASKET				1.00
13	NS6090310SP	NUT 9/64-40				1.00
14	TA2000502R0	RUBBER PLUG				1.00
15	11095254	LEVER STOPPER ASM.	FOR DMN-5420N-7-0B,-WB			1.00
16	SS1120710SP	SCREW 3/16-28 L=6.5	FOR DMN-5420N-7-0B,-WB			1.00
17	TA2101002R0	RUBBER PLUG				2.00
18	11030202	RUBBER BUSHING	FOR DMN-5420N-7-00			1.00
19	40111022	MAGNET CORD RUBBER	FOR DMN-5420N-7-0B,-WB			1.00
20	22945463	THREAD TENSION ASM. NO.1				1.00
21	22945703	THREAD TENSION NUT		*		1.00
22	22945505	THREAD TENSION SPRING		*		1.00
23	22945802	THREAD TENSION DISK		*		2.00
24	22945604	THREAD TENSION GUIDE		*		1.00
25	22945406	THREAD TENSION POST		*		1.00
26	SS4120615SP	SCREW 3/16-28 L=6				1.00
27	22900609	THREAD TAKE-UP LEVER COVER				1.00
28	SS4120615SP	SCREW 3/16-28 L=6				1.00
29	22920508	ARM THREAD GUIDE A				1.00
30	22921001	SCREW				1.00
31	TA0850604R0	RUBBER PLUG				1.00
32	22945356	THREAD TENSION ASM.				1.00
33	22921308	THREAD TENSION NUT		*		1.00
34	22921407	ROTATION STOPPER		*		1.00
35	22921704	THREAD TENSION SPRING A		*		1.00
36	22921803	DISK STOPPER		*		1.00
37	22921506	THREAD TENSION DISK		*		2.00
38	22921209	THREAD TENSION POST		*		1.00
39	22921605	THREAD TAKE-UP SPRING		*		1.00
40	22945307	THREAD TENSION POST BASE		*		1.00
41	SS8090670SP	SCREW 9/64-40 L=5.5		*		1.00
42	SS8150710TP	SCREW 15/64-28 L=7				1.00
43	22972608	ARM THREAD GUIDE C				1.00
44	B1190530D00	GAUGE DD				1.00
45	SS2110915SP	SCREW 11/64-40 L=8.5				2.00

46	22920607	ARM THREAD GUIDE B				1.00
47	SS6110610TP	SCREW 11/64-40 L=6				1.00
48	TA1250406R0	RUBBER PLUG D=12.5 L=4				2.00
49	SS4121015SP	SCREW 3/16-28 L=10				3.00
50	22901250	SLIDE PLATE ASM.				1.00
51	B1110012000	SLIDE PLATE		*		1.00
52	11001609	BED SLIDE SPRING		*		1.00
53	SS6060210SP	SCREW 3/32-56 L=1.9		*		1.00
54	22901003	BED SCREW STUD				4.00
55	11300407	PRESSER BAR SUPPORT				1.00
56	11300605	GASKET				1.00
57	SS1120710SP	SCREW 3/16-28 L=6.5				4.00
58	11345709	OIL SHIELD				1.00
59	SS6110610TP	SCREW 11/64-40 L=6				1.00
60	11345600	OIL RUBBER				1.00
61	B31334150A0	TENSION RELEASE PIN CAP ASM.				1.00
62	B3118415000	TENSION RELEASE PIN		*		1.00
63	B3136415000	CAP RING		*		1.00
64	WT0530002KS	TOOTHED WASHER D=5.3				1.00
65	SS4120615SP	SCREW 3/16-28 L=6				1.00
66	11372554	LEVER STOPPER ASM.	FOR DMN-5420N-7-00			1.00
67	B11155300AD	THROAT PLATE COVER				1.00
68	B1115522000A	OPEN COVER SPRING		*		1.00
69	SS4080310SP	SCREW 1/8-44 L=3.4		*		1.00
70	CM301300001	SAFETY LABEL				1.00
71	40116677	GOST_SAFETY_LABEL_S	FOR JE			1.00
72	11346400	WASTE MATERIAL GUIDE				1.00
73	11345808	SCREW				2.00
74	B1193530000	WASTE MATERIAL GUARD PLATE				1.00
75	11346905	WASTE MATERIAL GUARD E				1.00
76	11346004	NEEDLE PLATE A				1.00
77	SS6080410SP	SCREW 1/8-44 L=4				2.00
78	SS2110915SP	SCREW 11/64-40 L=8.5				2.00
79	CM300200001	ATTENTION SEAL				2.00
80	22901805	GROUND MARK				1.00
81	11415205	THREAD TAKE-UP LEVER COVER(JE)	FOR JE			1.00

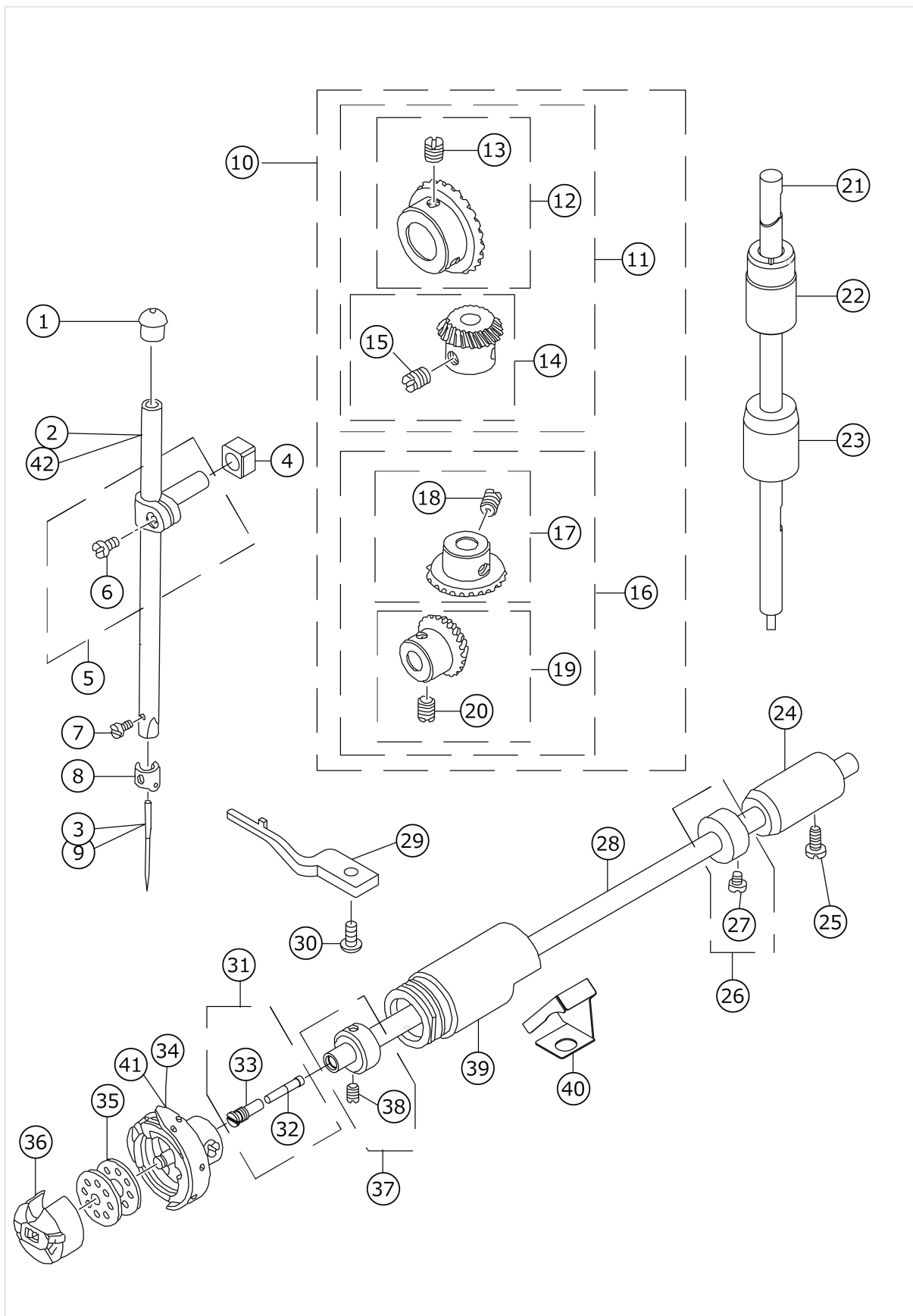
# MAIN SHAFT & THREAD TAKE-UP LEVER COMPONENTS



No.	品番	品名	備考	子部品	消耗品	個数
1	SS8151150TP	SCREW 15/64-28 L=10.5				1.00
2	11017357	THREAD TAKE-UP CRANK SHAFT ASM.				1.00
3	22919203	OIL PROTECTING RUBBER				1.00
4	22918072	THREAD TAKE-UP LEVER COMPL.				1.00
5	22918064	THREAD TAKE-UP LEVER ASM.		*		1.00
6	22918403	NEEDLE BEARING A	SELECTIVE PARTS(A ~ D)	*		2.00
7	22918502	NEEDLE BEARING B	SELECTIVE PARTS(A ~ D)	*		2.00
8	22918601	NEEDLE BEARING C	SELECTIVE PARTS(A ~ D)	*		2.00
9	22918700	NEEDLE BEARING D	SELECTIVE PARTS(A ~ D)	*		2.00
10	22918106	NEEDLE BAR CRANK		*		1.00
11	22906606	NEEDLE BAR CRANK ROD		*		1.00
12	22918304	LEFT SCREW		*		1.00
13	11349008	MAIN SHAFT				1.00
14	40097024	COUNTER WEIGHT MN COMP.				1.00
15	SS8660610TP	SCREW 1/4-40 L=6		*		2.00
16	40095787	COUNTER WEIGHT_MN ASM.		*		1.00
17	40095788	COUNTER WEIGHT_MN		*		1.00
18	PS0400082KP	SPRING PIN		*		1.00
19	SS7681650TP	SCREW 9/32-28 L=16		*		1.00
20	SS8681650TP	SCREW 9/32-28 L=16		*		1.00
21	RO044240100	RUBBER RING		*		1.00
22	RC1850001KP	SNAP RING 18.5				1.00
23	11302353	FEED DRIVE ECCENTRIC CAM ASM.				1.00
24	SS6661110SP	SCREW 1/4-40 L=11		*		2.00
25	11302304	FEED DRIVE ECCENTRIC CAM		*		1.00
26	22910103	THRUST COLLAR				1.00
27	SS4090615SP	SCREW 9/64-40 L=6				2.00
28	11002409	MAIN SHAFT BUSHING REAR				1.00
29	11071495	HAND WHEEL ASM.				1.00
30	SS6111210SP	SCREW 11/64-40 L=12		*		2.00
31	WP0450801SD	WASHER 4.5X10X0.8		*		2.00
32	SS8151550SP	SCREW 15/64-28 L=15		*		2.00
33	11032158	HAND WHEEL ASM.		*		1.00
34	M40071100AA	MAGNET FITTING BASE A ASM.		*		1.00
35	M40071100AB	MAGNET FITTING BASE B ASM.		*		1.00
36	22937965	DYNAMO STATOR				1.00
37	11002904	ROLLER FELT				1.00
38	SL4051001MZ	SCREW M5 L=9.6				2.00
39	B1213552000A	OIL ADJUSTING PIN				1.00
40	RO029180100	RUBBER RING				1.00
41	B1215552000	OIL ADJUSTING COLLAR				1.00
42	11349107	BUSHING FRONT				1.00
43	22903306	BUSHING INTERMEDIATE				1.00
44	40105231	OIL SEAL				1.00
45	22904155	MAIN SHAFT THRUST COLLAR ASM.				1.00
46	SS8660610TP	SCREW 1/4-40 L=6		*		2.00



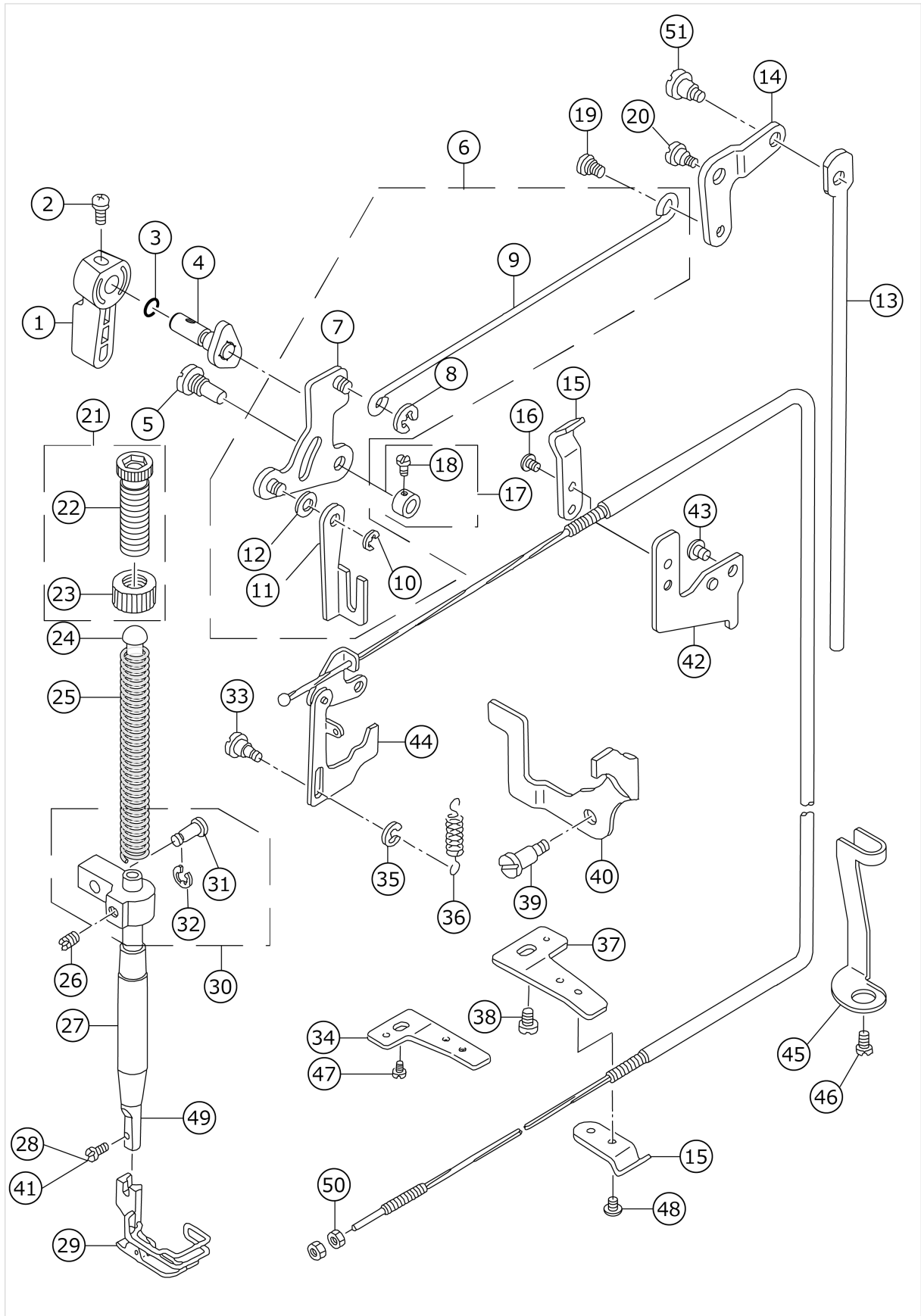
# NEEDLE BAR, UPRIGHT SHAFT & HOOK DRIVING SHAFT COMPONENTS



No.	品番	品名	備考	子部品	消耗品	個数
1	TA1250804R0	RUBBER PLUG				1.00
2	B1401530A00	NEEDLE BAR A				1.00
3	MC200500900	NEEDLE 134 NM90	FOR JE			1.00
4	40090058	SLIDE BLOCK				1.00
5	22906457	NEEDLE BAR HOLDER ASM.				1.00
6	SS6090670TP	SCREW 9/64-40 L=6		*		1.00
7	SS7080510TP	SCREW 1/8-44 L=4.5				1.00
8	B1418530000	NEEDLE BAR THREAD GUIDE				1.00
9	MDB100B1400	NEEDLE DBX1 #14				1.00
10	B13061550C0	GEAR & PINION ASM.				1.00
11	B13061550B0	GEAR & PINION ASM. UPPER		*		1.00
12	B13050120A0	GEAR ASM.		*		1.00
13	SS8660810TP	SCREW 1/4-40 L=8		*		2.00
14	B13061550A0	PINION ASM.		*		1.00
15	SS8660810TP	SCREW 1/4-40 L=8		*		2.00
16	B13071550B0	GEAR & PINION ASM. LOWER		*		1.00
17	B13071550A0	GEAR ASM. LARGE		*		1.00
18	SS8660810TP	SCREW 1/4-40 L=8		*		2.00
19	B13081550A0	PINION ASM.		*		1.00
20	SS8660810TP	SCREW 1/4-40 L=8		*		2.00
21	22905004	UPRIGHT SHAFT				1.00
22	22905103	UPRIGHT SHAFT BUSHING UPPER				1.00
23	11004207	UPRIGHT SHAFT BUSHING LOWER				1.00
24	22916308	HOOK DRIVING SHAFT BUSH REAR				1.00
25	SS4120915SP	SCREW 3/16-28 L=9				1.00
26	22917157	THRUST COLLAR ASM. REAR				1.00
27	SS6110420TP	SCREW 11/64-40 L=4.8		*		2.00
28	22916001	HOOK DRIVING SHAFT				1.00
29	11038809	BOBBIN CASE HOLDER				1.00
30	SS4110915TP	SCREW 11/64-40 L=9				1.00
31	22916555	OIL SEAL SCREW ASM.				1.00
32	11015906	OIL WICK		*		1.00
33	22916506	SET SCREW		*		1.00
34	11141355	HOOK ASM.				1.00
35	22932909	BOBBIN				1.00
36	11038759	BOBBIN CASE ASM.				1.00
37	22917058	THRUST COLLAR ASM. FRONT				1.00
38	SS8110410TP	SCREW 11/64-40 L=3.5		*		2.00
39	11351004	BUSHING FRONT				1.00
40	22942601	OIL SHIELD				1.00
41	11038650	HOOK ASM.	FOR USE IN JAPAN,JH			1.00
42	B1401530B00	NEEDLE BAR B	FOR JE			1.00



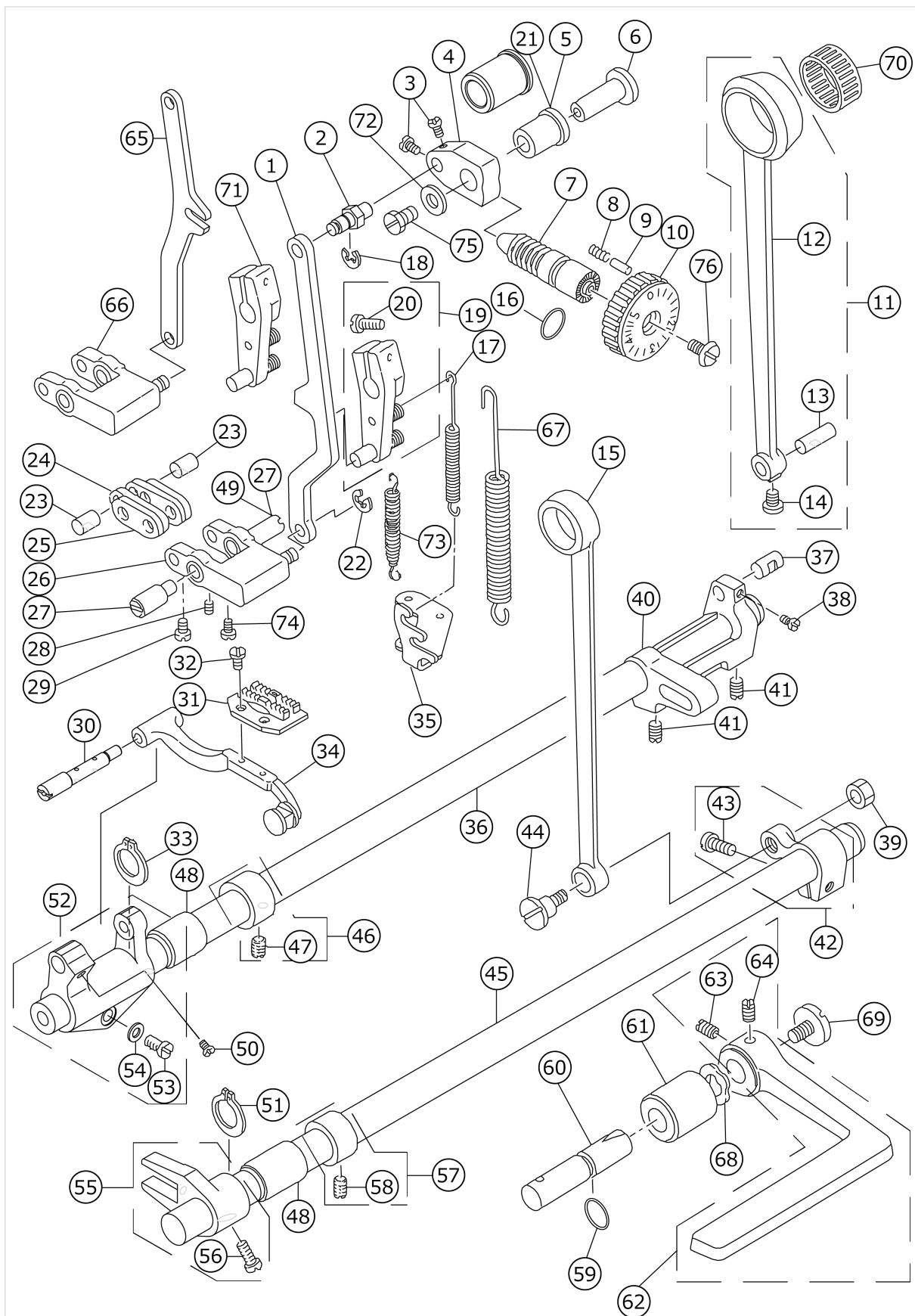
# HAND LIFTER COMPONENTS



No.	品番	品名	備考	子部品	消耗品	個数
1	22907802	HAND LIFTER				1.00
2	B1521555000	SCREW				1.00
3	RO037180100	RUBBER RING				1.00
4	22908552	HAND LIFTER CAM ASM.				1.00
5	11301702	LINK SHAFT				1.00
6	11301652	LIFTING LEVER ASM.				1.00
7	22908156	LIFTING LINK ASM.		*		1.00
8	RE0500000K0	E-RING		*		2.00
9	22908305	KNEE LIFTER SIDE ROD		*		1.00
10	RE0500000K0	E-RING		*		1.00
11	11301603	LIFTING LEVER		*		1.00
12	WP0650876SD	WASHER 6.5X13X0.8		*		1.00
13	11205408	CONNECTING ROD				1.00
14	11205309	LIFTING LEVER LINK				1.00
15	22944508	WIRE PRESSER A				2.00
16	SS4110515SP	SCREW 11/64-40 L=5				2.00
17	CS064061ASP	THRUST COLLAR ASM.				1.00
18	SS7090620TP	SCREW 9/64-40 L=6.1		*		2.00
19	22908909	HINGE SCREW				1.00
20	SD0720331SP	HINGE SCREW D=7.24 H=3.3				1.00
21	22907554	PRESSER SPRING REGULATOR ASM.				1.00
22	22907505	PRESSER SPRING REGULATOR		*		1.00
23	22907604	PRESSER SPRING REGULATOR NUT		*		1.00
24	22907703	PRESSER GUIDE BAR				1.00
25	22907406	PRESSER SPRING				1.00
26	SS8660610TP	SCREW 1/4-40 L=6				1.00
27	40060989	PRESSER BAR BUSHING LOWER				1.00
28	SS7090710SP	SCREW 9/64-40 L=6.8	FOR DMN-5420N-7-00,-0B			1.00
29	B1524530DB0	PRESSER FOOT ASM.				1.00
30	11301355	NEEDLE BAR GUIDE BRACKET ASM.				1.00
31	11301405	PIN		*		1.00
32	RE0300000K0	E-RING 3		*		2.00
33	11306107	TENSION RELEASE PLATE SHAFT				1.00
34	22944706	WIRE PRESSER BASE LOWER	FOR DMN-5420N-7-00			1.00
35	RE0300000K0	E-RING 3				1.00
36	11305901	SPRING				1.00
37	22962807	WIRE PRESSER PLATE B	FOR DMN-5420N-7-0B,-WB			1.00
38	SS7110740TP	SCREW 11/64-40 L=7	FOR DMN-5420N-7-0B,-WB			1.00
39	SD0640261SP	HINGE SCREW D=3.65 H=2.6				1.00
40	11355609	TENSION RELEASE HOLDER				1.00
41	SS6090910SP	SCREW 9/64-40 L=9	FOR DMN-5420N-7-WB			1.00
42	22944607	WIRE PRESSER BASE UPPER				1.00
43	SS4120615SP	SCREW 3/16-28 L=6				1.00
44	11355351	TENSION RELEASE WIRE ASM.				1.00
45	11306206	WIRE CABLE HOLDER				1.00

46	SS4120615SP	SCREW 3/16-28 L=6				1.00
47	SS4150915SP	SCREW 15/64-28 L=9	FOR DMN-5420N-7-00			1.00
48	SS4110515SP	SCREW 11/64-40 L=5				1.00
49	B1501530000	PRESSER BAR				1.00
50	NS6620310SP	NUT 3/16-32				2.00
51	SD0600322SD	HINGE SCREW D=6 H=3.2				1.00

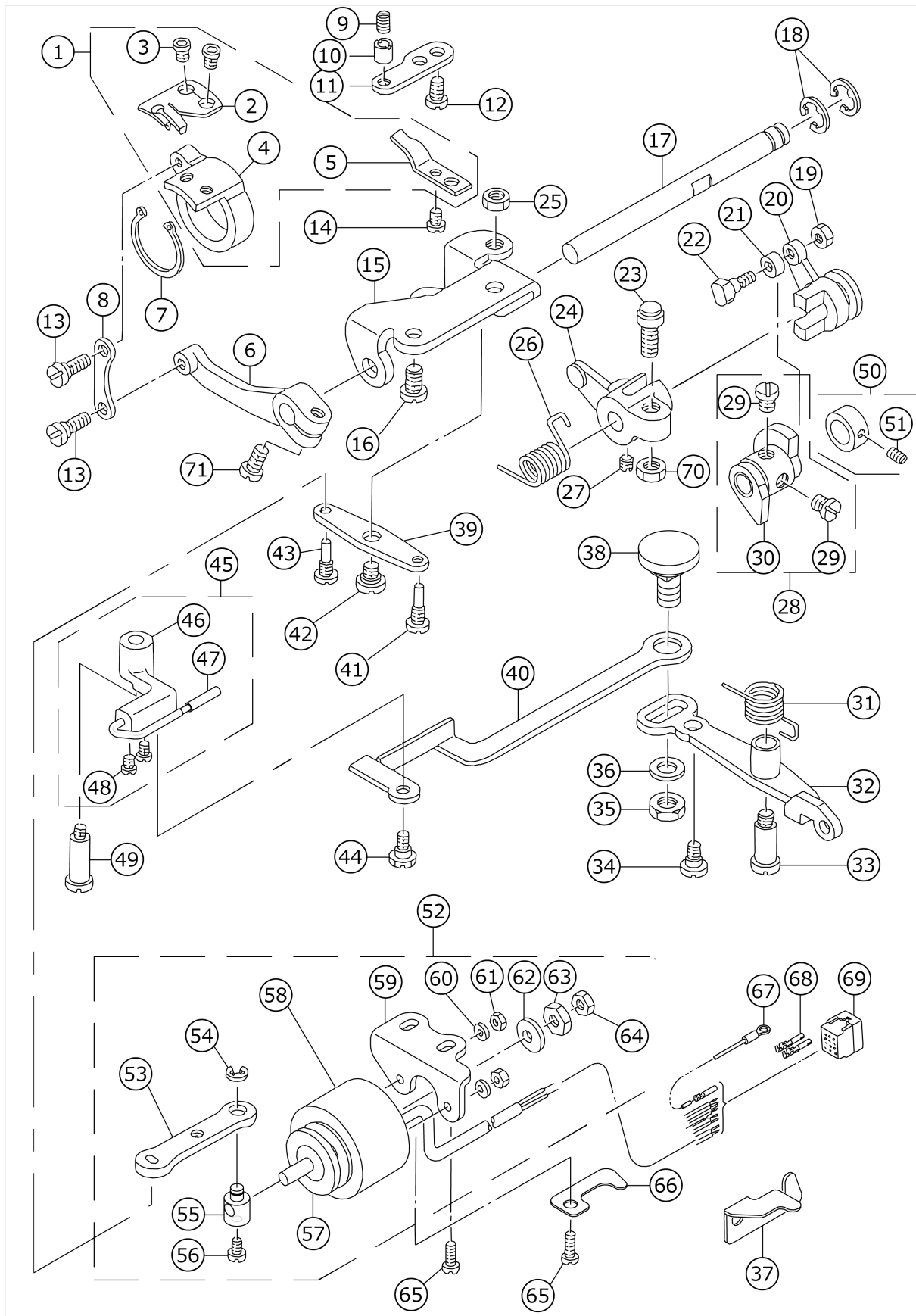
# FEED MECHANISM COMPONENTS



No.	品番	品名	備考	子部品	消耗品	個数
1	11314507	FEED ADJUST ROD	FOR DMN-5420N-7-0B,-WB			1.00
2	22971204	FEED REGULATOR BASE PIN				1.00
3	SS6090560TP	SCREW 9/64-40 L=4.5				2.00
4	11303328	FEED REGULATOR BUSHING				1.00
5	11009800	FEED REGULATOR BUSHING	FOR DMN-5420N-7-0B,-WB			1.00
6	11385127	FEED REGULATOR SHAFT				1.00
7	22911804	FEED REGULATOR SCREW				1.00
8	B1148555000	SPRING				1.00
9	22912000	FEED REGULATOR PIN				1.00
10	11397007	FEED DIAL				1.00
11	40081220	ROCKER SHAFT CONNECTING ROD ASM.				1.00
12	11302411	ROCKER SHAFT CONNECTING ROD		*		1.00
13	22911101	WALKING FOOT PIN C		*		1.00
14	SS6090620TP	SCREW		*		1.00
15	22915003	CONNECTING ROD				1.00
16	RO092270200	RUBBER RING				1.00
17	11302700	SPRING	FOR DMN-5420N-7-0B,-WB			1.00
18	RE0500000K0	E-RING				1.00
19	22971550	FEED LEVER ARM ASM.	FOR DMN-5420N-7-00			1.00
20	SS7121410TP	SCREW 3/16-28 L=14		*		1.00
21	22911705	FEED REGULATOR BUSHING				1.00
22	RE0500000K0	E-RING				1.00
23	22910905	WALKING FOOT PIN A				2.00
24	22910707	CONNECTING LINK B				2.00
25	22910608	CONNECTING LINK A				2.00
26	11303161	FEED ADJUST LINK ASM.	FOR DMN-5420N-7-00			1.00
27	22910806	ADJUST LINK FULCRUM SHAFT A				2.00
28	SS8150710TP	SCREW 15/64-28 L=7				1.00
29	SS6090620TP	SCREW				2.00
30	22940803	FEED BAR SHAFT				1.00
31	B1609530D00	FEED DOG D				1.00
32	SS4080620TP	SCREW 1/8-44 L=6				2.00
33	RC0150001KP	RETAINING RING 13.8				1.00
34	22940753	FEED BAR ASM.				1.00
35	22970602	FEED SPRING HOOK				1.00
36	22912901	FEED ROCKER SHAFT				1.00
37	22911002	WALKING FOOT PIN B				1.00
38	SS6090620TP	SCREW				1.00
39	NS6680410SP	NUT 9/32-28				1.00
40	11302502	FEED ROCKER SHAFT CRANK				1.00
41	SS8681130SP	SCREW 9/32-28 L=11				2.00
42	22915151	FEED ARM COMPL.				1.00
43	SS7121610SP	SCREW 3/16-28 L=15.5		*		1.00
44	SD1000801SH	HINGE SCREW D=10 H=8				1.00
45	22915201	FEED DRIVING SHAFT				1.00

46	22904155	MAIN SHAFT THRUST COLLAR ASM.				1.00
47	SS8660610TP	SCREW 1/4-40 L=6		*		2.00
48	22913008	FEED ROCKER SHAFT BUSHING				2.00
49	40010395	ADJUSTING LINK FULCRUM SHAFT B	FOR DMN-5420N-7-0B,-WB			1.00
50	SS7110740TP	SCREW 11/64-40 L=7				1.00
51	RC0150001KP	RETAINING RING 13.8				1.00
52	22940654	FEED ROCKER ASM.				1.00
53	SS7121410TP	SCREW 3/16-28 L=14		*		1.00
54	WP0480856SP	WASHER 4.8X8.4X0.8		*		1.00
55	22915359	DRIVING SHAFT CRANK ASM.				1.00
56	SS7111120SP	SCREW 11/64-40 L=10.5		*		1.00
57	22904155	MAIN SHAFT THRUST COLLAR ASM.				1.00
58	SS8660610TP	SCREW 1/4-40 L=6		*		2.00
59	RO078190100	RUBBER RING				1.00
60	22967202	FEED REVERSE SHAFT				1.00
61	22912802	FEED LEVER SHAFT BUSHING				1.00
62	22912752	FEED LEVER ASM.				1.00
63	SM8061010TP	SCREW		*		1.00
64	SM8061050TP	SCREW		*		1.00
65	22971105	FEED REGULATOR ROD	FOR DMN-5420N-7-00			1.00
66	11314267	FEED ADJUST LINK ASM.	FOR DMN-5420N-7-0B,-WB			1.00
67	11302619	SPRING				1.00
68	WZ1250300K0	WAVED WASHER 12.5X17X0.3	FOR DMN-5420N-7-00			1.00
69	SS7620750SP	SCREW 3/16-32 L=6.5	FOR DMN-5420N-7-00			1.00
70	B1636581C00	NEEDLE BEARING	SELECTIVE PARTS			1.00
71	11311057	FEED REVERSE ARM ASM.	FOR DMN-5420N-7-0B,-WB			1.00
72	WP0702026SP	WASHER 7X15X2				1.00
73	11305000	SPRING	FOR DMN-5420N-7-00			1.00
74	SS6151220SP	SCREW 15/64-28 L=11.5				1.00
75	SS9661120CP	SCREW 1/4-40 L=10.5				1.00
76	SS6121860SP	SCREW 3/16-28 L=18				1.00

# THREAD TRIMMER MECHANISM COMPONENTS

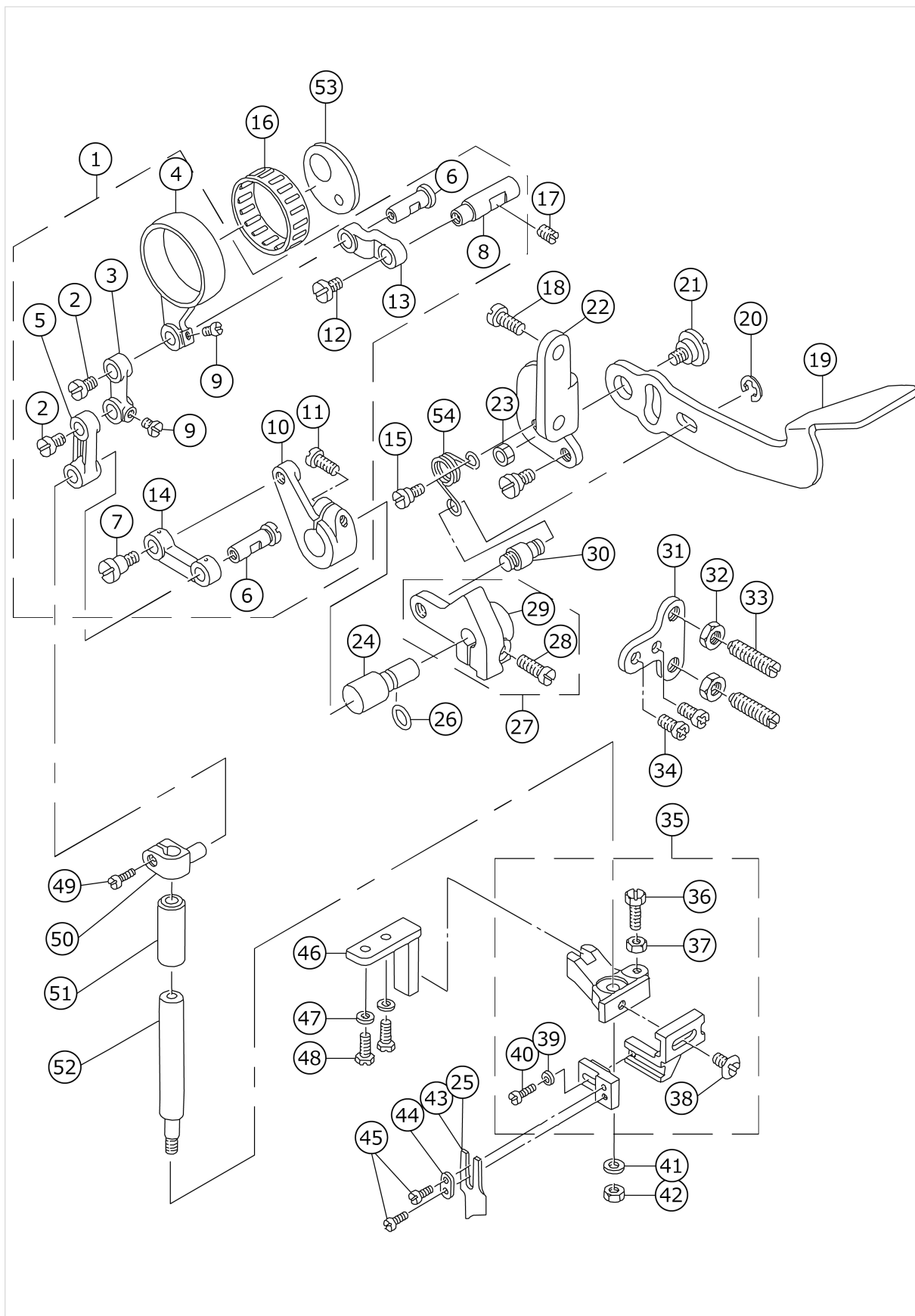


No.	品番	品名	備考	子部品	消耗品	個数
1	40120641	MOVING KNIFE ASM.				1.00
2	11351400	MOVING KNIFE		*		1.00
3	11351806	SCREW		*		2.00
4	11351905	MOVING KNIFE BASE		*		1.00
5	11351509	COUNTER KNIFE		*		1.00
6	11352200	KNIFE DRIVING				1.00
7	RC2651218KP	RETAINING RING				1.00
8	11352101	MOVING KNIFE LINK				1.00
9	SS8110710SP	SCREW 11/64-40 L=6.5				1.00
10	11354602	COLLAR				1.00
11	11351608	KNIFE MOUNTING BASE				1.00
12	SS4110715SP	SCREW 11/64-40 L=7				2.00
13	SD0500251SP	HINGE SCREW D=5 H=2.5				2.00
14	SS1090510SP	SCREW 9/64-40 L=5				1.00
15	11352408	BASE PLATE				1.00
16	SS4150915SP	SCREW 15/64-28 L=9				2.00
17	11352309	KNIFE DRIVING SHAFT				1.00
18	RE0600000K0	E-RING 6				2.00
19	NS6110310SP	NUT 11/64-40				1.00
20	11352606	SLIDE ARM				1.00
21	11354404	DRIVING ROLLER				1.00
22	D2588L8WB00	ROLLER SHAFT				1.00
23	B14537710A0	STOP SCREW ASM.				1.00
24	11352507	KNIFE DRIVING ARM				1.00
25	NS6150310SP	NUT 15/64-28				1.00
26	11353406	SPRING				1.00
27	SS8660610TP	SCREW 1/4-40 L=6				2.00
28	11353653	THREAD TRIMMER CAM ASM.				1.00
29	SS6660610TP	SCREW 1/4-40 L=6		*		2.00
30	11353604	THREAD TRIMMER CAM		*		1.00
31	11353505	SPRING				1.00
32	11353059	CLUTCH LEVER ASM.				1.00
33	SD0701511TP	HINGE SCREW D=7 H=15.1				1.00
34	SD0600361SP	HINGE SCREW D=6 H=3.6				1.00
35	NS6150430SP	NUT 15/64-28				1.00
36	WP0621016SH	WASHER				1.00
37	22962708	REVERSE FEED CORD PRESSER	FOR DMN-5420N-7-0B,-WB			1.00
38	22950000	PICKER LINK PIN				1.00
39	11352903	CLUTCH PLATE				1.00
40	11354107	PICKER LINK				1.00
41	11352705	SCREW PIN A				1.00
42	SD0640261SP	HINGE SCREW D=3.65 H=2.6				1.00
43	11352804	SCREW PIN B				1.00
44	SD0630275SP	HINGE SCREW D=6.35 H=2.7				1.00
45	11354057	PICKER ARM ASM.				1.00
46	11354008	PICKER ARM		*		1.00
47	22950356	HOOK THREAD PRESSER ASM.		*		1.00
48	SS6090510SP	SCREW 9/64-40 L=5		*		2.00
49	SD0641452TP	HINGE SCREW D=6.35 H=14.5				1.00



50	22950950	CAM COLLAR ASM.			1.00
51	SS8110520TP	SCREW 11/64-40 L=4.5		*	1.00
52	11355054	SOLENOID UNIT			1.00
53	11353307	CLUTCH LINK		*	1.00
54	RE0500000K0	E-RING		*	1.00
55	22951008	SOLENOID PIN		*	1.00
56	SS6110710TP	SCREW 11/64-40 L=6.5		*	1.00
57	11043205	SOLENOID RUBBER A		*	1.00
58	11043106	THREAD TRIMMER SOLENOID		*	1.00
59	22951404	SOLENOID BASE		*	1.00
60	WP0450000SD	WASHER 4.5X8X0.5		*	2.00
61	NM6040000SN	NUT M4		*	2.00
62	11043304	SOLENOID RUBBER		*	1.00
63	NS6660410SH	NUT		*	1.00
64	NS6660430SP	NUT 1/4-40		*	1.00
65	SS4151215SP	SCREW 15/64-28 L=12			2.00
66	22924807	PIPE HOLDER LOWER			1.00
67	22951552	GROUND WIRE ASM.			1.00
68	HK03464000B	PIN CONTACT	FOR DMN-5420N-7-00		2.00
69	HK034610140	HOUSING 14P			1.00
70	NS6150430SP	NUT 15/64-28			1.00
71	SS6121220TP	SCREW 3/16-28 L=11.5			1.00

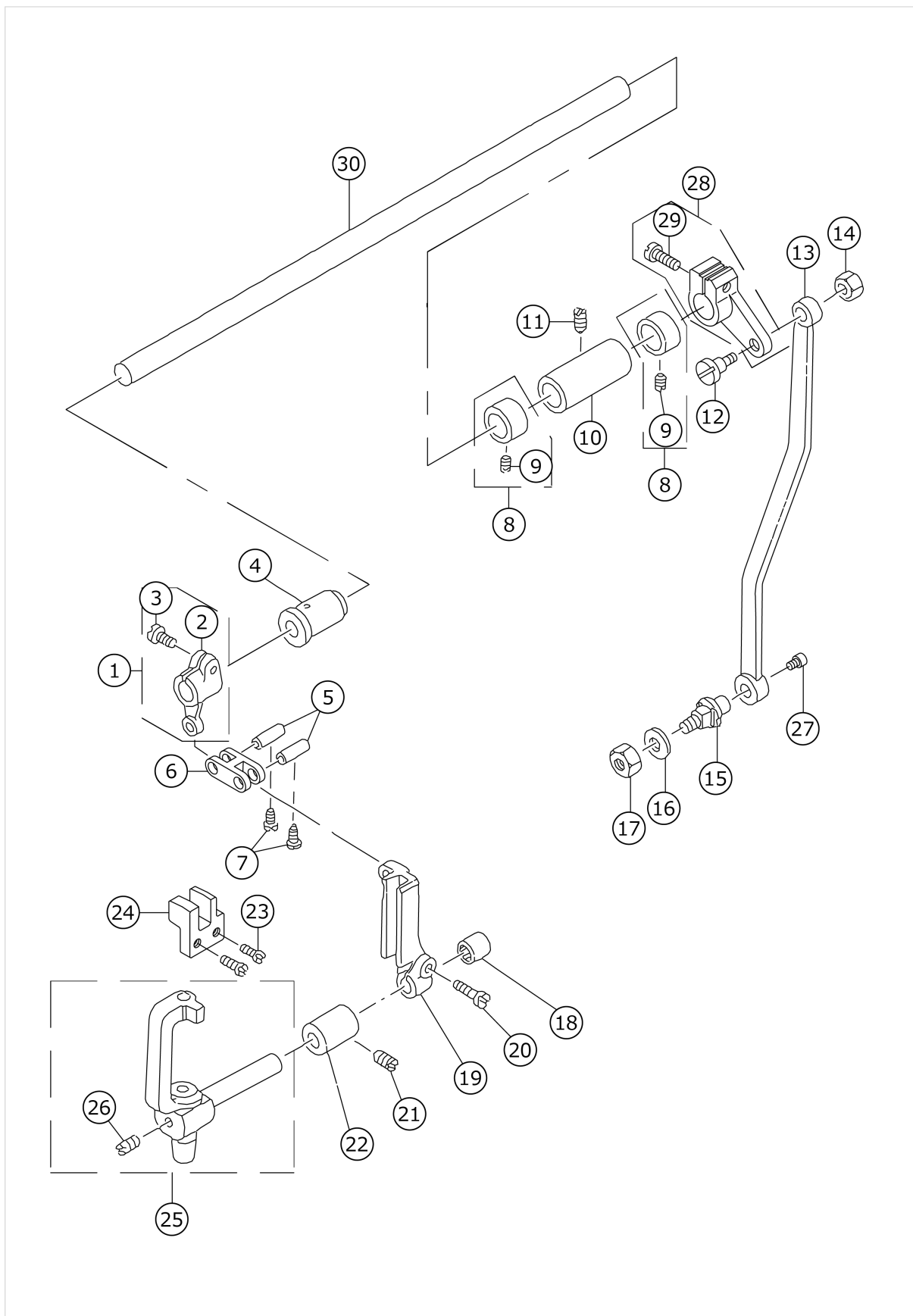
# KNIFE COMPONENTS



No.	品番	品名	備考	子部品	消耗品	個数
1	11356953	KNIFE ROD ASM.				1.00
2	SS7110830SP	SCREW 11/64-40 L=7.5		*		2.00
3	11357308	KNIFE DRIVING ROD A		*		1.00
4	11356904	KNIFE DRIVING ROD		*		1.00
5	11357407	KNIFE DRIVING ROD B		*		1.00
6	11357209	PIN		*		2.00
7	SD0640604TP	HING SCREW D=6.35 H=6		*		1.00
8	11357001	ROD LINK SHAFT		*		1.00
9	SS7090520TP	SCREW 9/64-40 L=4.5		*		2.00
10	11357704	LINK SUPPORT ARM		*		1.00
11	SS6121220TP	SCREW 3/16-28 L=11.5		*		1.00
12	SS7110830SP	SCREW 11/64-40 L=7.5		*		1.00
13	11357100	KNIFE DRIVING ROD LINK		*		1.00
14	11357506	KNIFE DRIVING LINK		*		1.00
15	SD0790431SP	HINGE SCREW D=7.94 H=4.3				1.00
16	B412352200A	NEEDLE BEARING	SELECTIVE PARTS(A ~ C)			1.00
17	SS8151150TP	SCREW 15/64-28 L=10.5				1.00
18	SS4150915SP	SCREW 15/64-28 L=9				2.00
19	11358207	KNIFE LEVER				1.00
20	RE0500000K0	E-RING				1.00
21	SD0920321SP	HINGE SCREW D=9.20 H=3.2				1.00
22	11358108	KNIFE LEVER BASE				1.00
23	NS6160520SP	NUT 1/4-24				1.00
24	11357803	KNIFE SET LEVER SHAFT				1.00
25	B4121522000	KNIFE	FOR USE IN JAPAN			1.00
26	RO048190100	RUBBER RING				1.00
27	11357951	KNIFE SHIFTING BASE ASM.				1.00
28	SS6121220TP	SCREW 3/16-28 L=11.5		*		1.00
29	11357902	KNIFE SET LEVER BASE		*		1.00
30	B4124530000	SET LEVER PIN				1.00
31	11358306	KNIFE LEVER STOPPER				1.00
32	NS6150310SP	NUT 15/64-28				2.00
33	SS8152080SP	SCREW 15/64-28 L=19.5				2.00
34	SS4120915SP	SCREW 3/16-28 L=9				2.00
35	B41175300A0	KNIFE MOUNTING BASE ASM.				1.00
36	SS9121410TP	SCREW 3/16-28 L=14		*		1.00
37	NS6120310SP	NUT 3/16-28		*		1.00
38	SS6110810TP	SCREW 11/64-40 L=8		*		1.00
39	WP0371026SD	WASHER 3.7X7X1		*		1.00
40	SS6090910SP	SCREW 9/64-40 L=9		*		1.00
41	WP0501016SD	WASHER 5X10.5X1				1.00
42	NS6120480SP	NUT 3/16-28				1.00
43	B4145530B0A	KNIFE				1.00
44	B4122522000	WASHER				1.00
45	SS4080515SP	SCREW 1/8-44 L=5				2.00
46	B4120530000	KNIFE MOUNTING BASE GUIDE				1.00
47	WP0480856SP	WASHER 4.8X8.4X0.8				2.00
48	SS9121010TP	SCREW				2.00

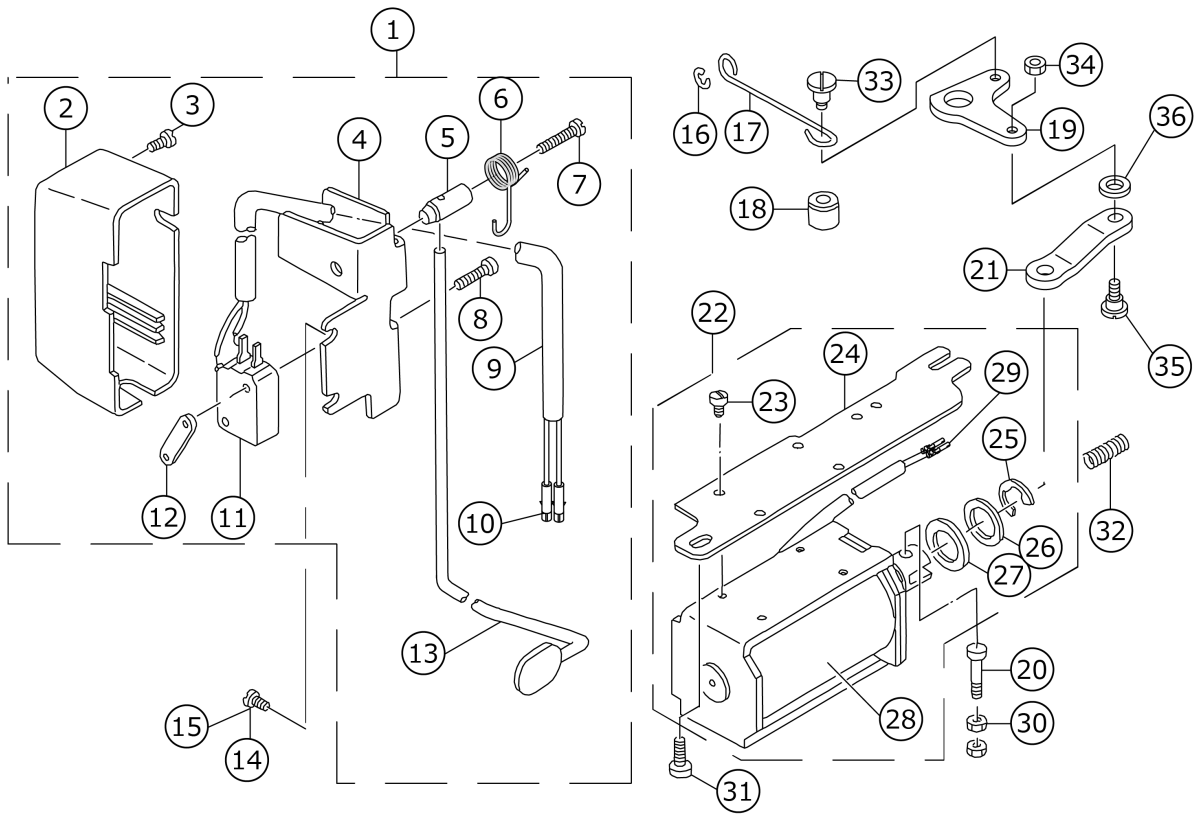
49	SS6090810TP	SCREW 9/64-40 L=7.5				1.00
50	B4115530000	KNIFE DRIVING STUD CONNECTION				1.00
51	B4116530000	BUSHING				1.00
52	B4114530000	KNIFE DRIVING STUD				1.00
53	11371705	THRUST PLATE				1.00
54	B4126530000	SPRING				1.00

# NEEDLE BAR FRAME COMPONENTS



No.	品番	品名	備考	子部品	消耗品	個数
1	11304052	SHAFT ARM ASM. (FRONT)				1.00
2	11304003	DRIVING CRANK FRONT		*		1.00
3	SS6121220TP	SCREW 3/16-28 L=11.5		*		1.00
4	11211000	ROCK SHAFT BUSHING FRONT				1.00
5	B1412352B00	NEEDLE BAR LINK PIN	SELECTIVE PARTS			2.00
6	B2906415000	DRIVING LINK				1.00
7	SS6090660TP	SCREW 9/64-40 L=6				2.00
8	CS120101BSH	THRUST COLLAR ASM.				2.00
9	SS8660410SP	SCREW 1/4-40 L=4.2		*		4.00
10	11210903	ROCK SHAFT BUSHING REAR				1.00
11	SS8120740SP	SCREW 3/16-28 L=7				1.00
12	SD0790501SP	HINGE SCREW D=7.94 H=5				1.00
13	11304201	CONNECTING ROD				1.00
14	NS6150310SP	NUT 15/64-28				1.00
15	11304300	CONNECTING ROD SHAFT				1.00
16	WP0621016SD	WASHER 6.2X13X1				1.00
17	NS6150430SP	NUT 15/64-28				1.00
18	SB309000400	BEARING				1.00
19	11303807	SLIDE BLOCK GUIDE				1.00
20	SS6121610SP	SCREW 3/16-28 L=15.5				1.00
21	SS8120740SP	SCREW 3/16-28 L=7				1.00
22	11214509	BUSHING				1.00
23	SS6090810SP	SCREW 9/64-40 L=7.5				2.00
24	11303906	NEEDLE BAR FRAME GUIDE				1.00
25	11303567	NEEDLE ROD ROCKING BASE ASM.				1.00
26	SS8110310SP	SCREW 11/64-40 L=2.8		*		1.00
27	SS6110640SP	SCREW 11/64-40 L=6				1.00
28	11304151	SHAFT ARM ASM. (REAR)				1.00
29	SS7121410SP	SCREW 3/16-28 L=14		*		1.00
30	11304409	CONNECTING SHAFT				1.00

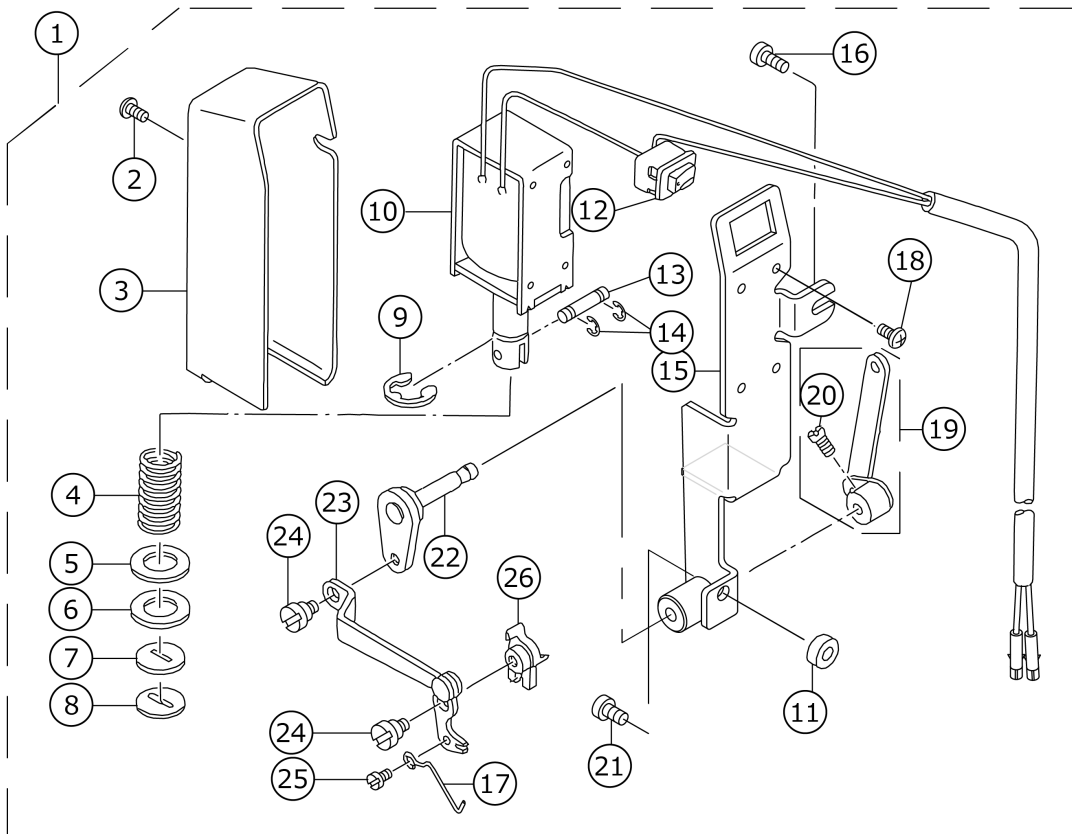
# AUTOMATIC REVERSE FEED COMPONENTS



No.	品番	品名	備考	子部品	消耗品	個数
1	11362357	REVERSE FEED SWITCH ASM.				1.00
2	22954606	REVERSE FEED SWITCH COVER		*		1.00
3	SM4040655SP	SCREW M4 L=6		*		1.00
4	22954101	REVERSE FEED SWITCH BASE		*		1.00
5	22954200	REVERSE FEED SWITCH SHAFT		*		1.00
6	22954309	REVERSE FEED SWITCH SPRING		*		1.00
7	SM4041655SP	SCREW M4 L=16		*		1.00
8	SM4031501SC	SCREW M3 L=15		*		2.00
9	HW500070000	2-CORE CABTYRE CORD		*		1.31
10	HK03464000B	PIN CONTACT		*		2.00
11	HA001900000	MICROSWITCH		*		1.00
12	11102308	MICRO SWITCH PLATE		*		1.00
13	11364700	REVERSE FEED SWITCH LEVER		*		1.00
14	SS4120615SP	SCREW 3/16-28 L=6	FOR DMN-5420N-7-0B			1.00
15	SS4120915SP	SCREW 3/16-28 L=9				1.00
16	RE0500000KP	E-RING 5				1.00
17	11101300	REVERSE FEED CONNECTING SHAFT				1.00
18	22962609	REVERSE FEED BASE COLLAR				1.00
19	11101508	REVERSE FEED LINK				1.00
20	22962906	PLUNGER ARM PIN				2.00
21	11101607	SOLENOID CONNECTING LINK				1.00
22	11372356	SOLENOID INSTALLING PLATE				1.00
23	SS7110740TP	SCREW 11/64-40 L=7		*		4.00
24	11372109	SOLENOID INSTALLING PLATE		*		1.00
25	RE1200000K0	E-RING 12		*		1.00
26	WP1703001SC	WASHER 17X30X3		*		1.00
27	D2468555B00	RUBBER PLUNGER		*		1.00
28	11228400	REVERSE FEED SOLENOID		*		1.00
29	HK03464000B	PIN CONTACT		*		2.00
30	NS6110420SP	NUT 11/64-40				2.00
31	SS4151215SP	SCREW 15/64-28 L=12				1.00
32	11217601	WALKING FOOT SPRING				1.00
33	SD0700451TP	HINGE SCREW D=7 H=4.5				1.00
34	NS6110420SP	NUT 11/64-40				1.00
35	SD0700711TP	HINGE SCREW D=7 H=7.1				1.00
36	WP0722316SH	WASHER				1.00

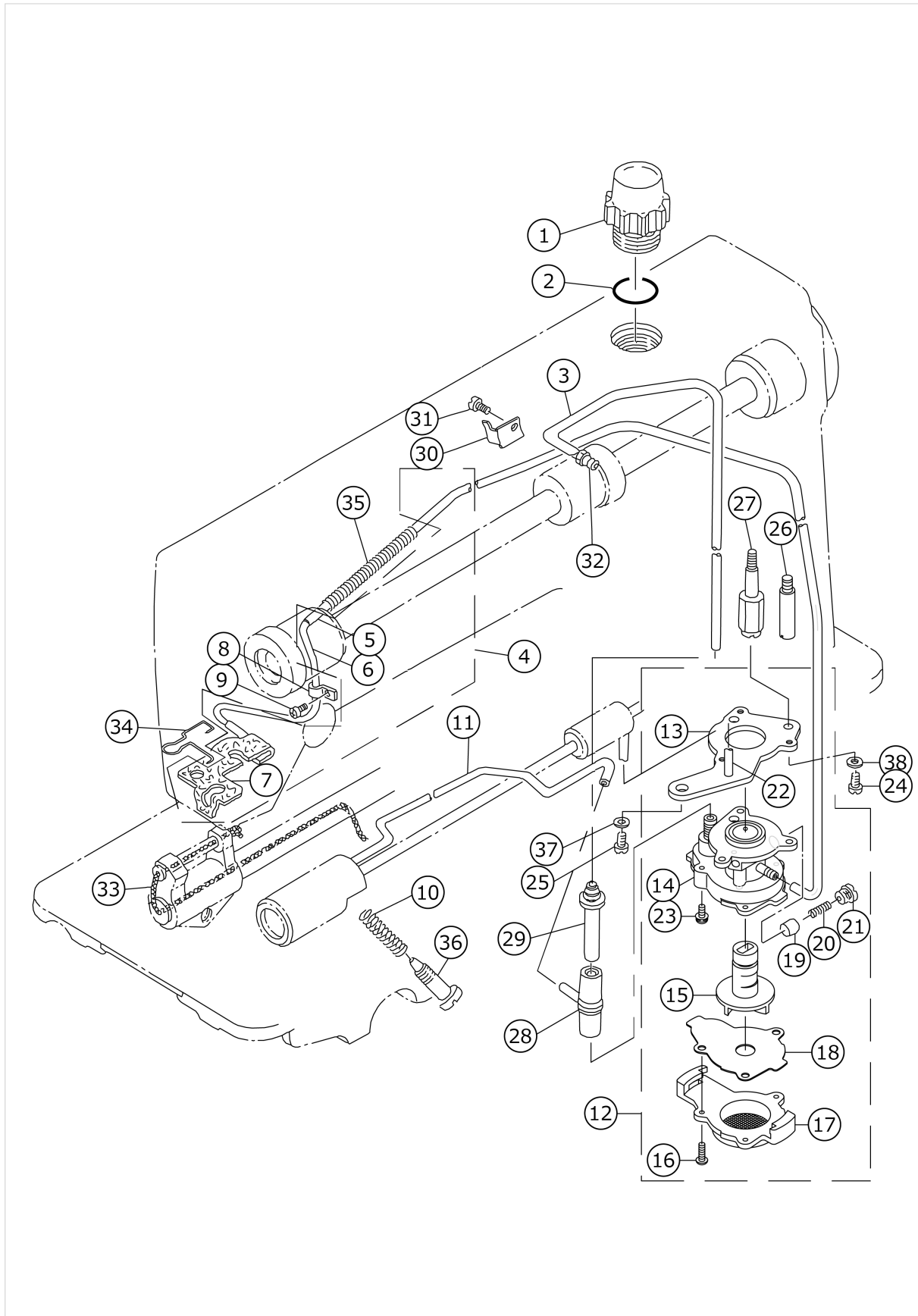


# WIPER COMPONENTS



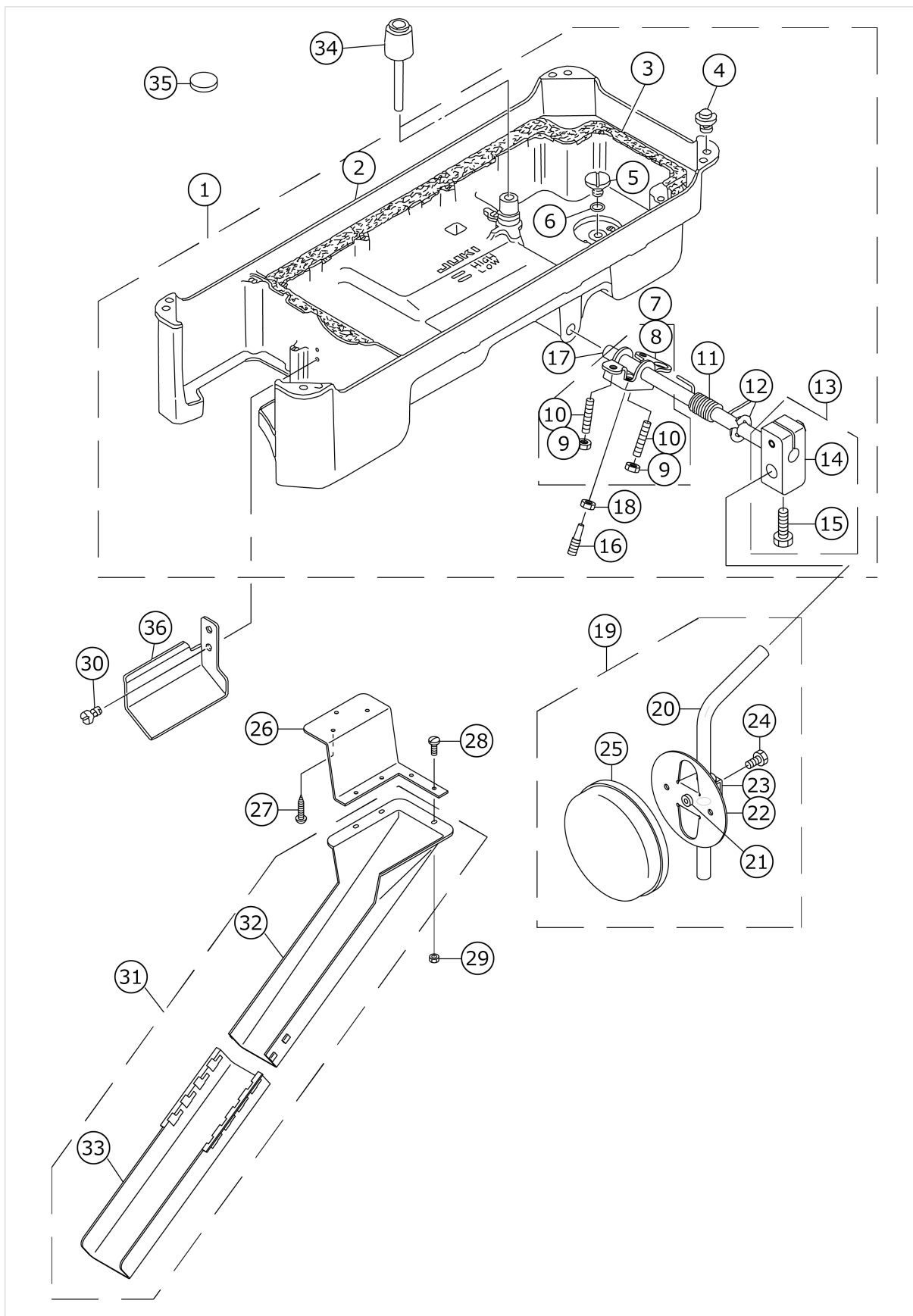
No.	品番	品名	備考	子部品	消耗品	個数
1	11362456	WIPER ASM.				1.00
2	SL4030631SC	SCREW M3X6		*		1.00
3	11258001	WIPER COVER		*		1.00
4	11233400	SPRING		*		1.00
5	WP1221016SP	WASHER		*		1.00
6	11234408	SOLENOID RUBBER		*		1.00
7	11233301	STOPPER RUBBER		*		1.00
8	11234606	STOPPER RUBBER WASHER		*		1.00
9	RE0900000K0	E-RING 9		*		1.00
10	40112705	WIPER SOLENOID ASM.		*		1.00
11	13522206	COLLAR		*		1.00
12	HA00600000A	SWITCH		*		1.00
13	11234507	PLUNGER CONNECTING PIN		*		1.00
14	RE0300000K0	E-RING 3		*		2.00
15	11233053	WIPER INSTALLING BASE ASM.		*		1.00
16	SS4120915SP	SCREW 3/16-28 L=9		*		1.00
17	11359700	WIPER		*		1.00
18	SL4030641SE	SCREW		*		4.00
19	11233251	WIPER LEVER B ASM.		*		1.00
20	SS6110710TP	SCREW 11/64-40 L=6.5		*		2.00
21	SS4121415SP	SCREW 3/16-28 L=14		*		1.00
22	11360153	WIPER LEVER ASM. A		*		1.00
23	11359957	WIPER ARM ASM.		*		1.00
24	SD0550212TP	HINGE SCREW D=5.5 H=2.1		*		2.00
25	SS7090410SP	SCREW 9/64-40 L=3.5		*		1.00
26	11359809	WIPER BASE		*		1.00

# OIL LUBRICATION COMPONENTS



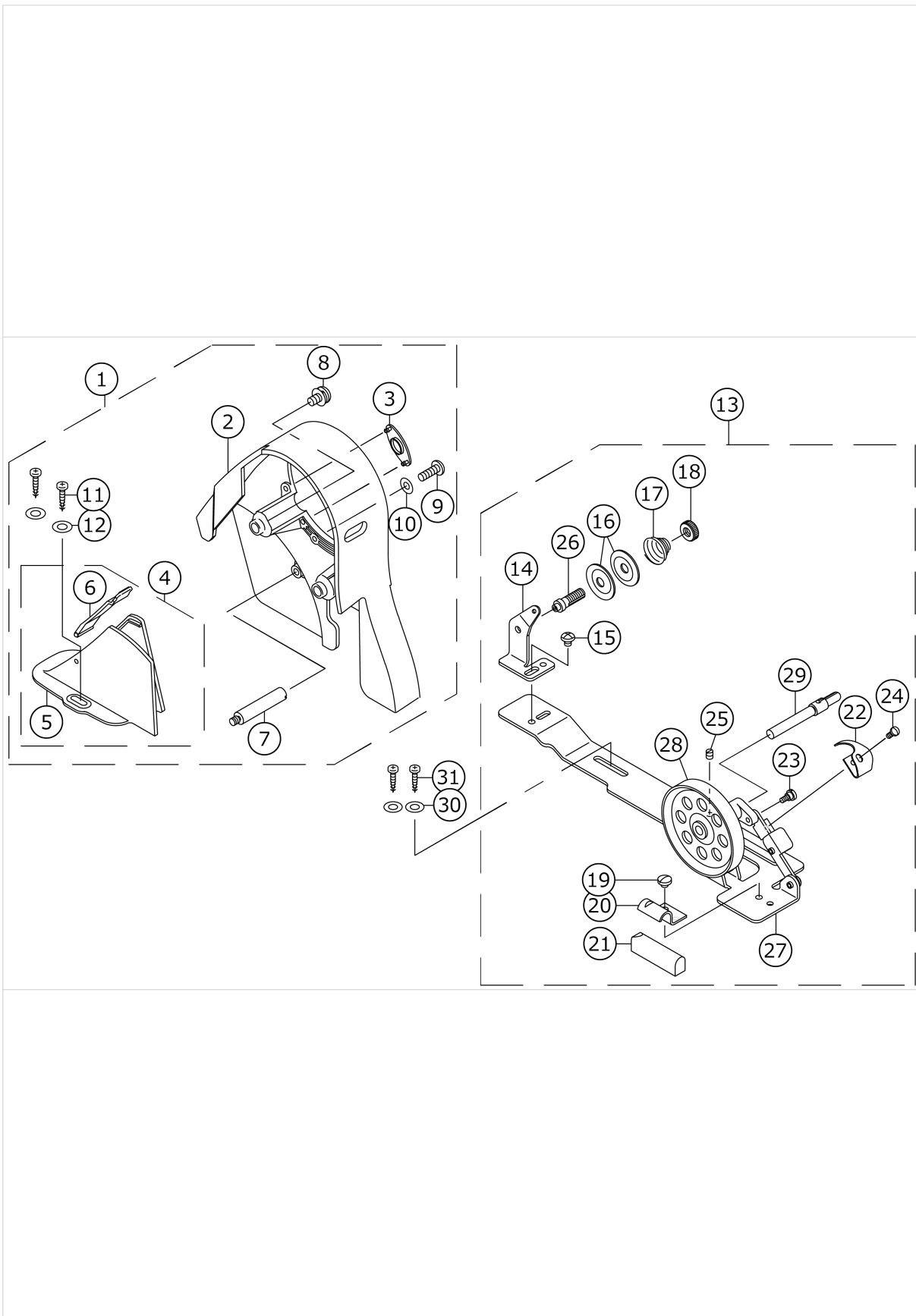
No.	品番	品名	備考	子部品	消耗品	個数
1	22947006	OIL SIGHT WINDOW				1.00
2	RO195240100	RUBBER RING				1.00
3	BT0600402EA	OIL TUBE				0.27
4	11371259	OIL RETURN TUBE ASM.				1.00
5	BT0500300EA	OIL TUBE		*		0.54
6	11371200	OIL RETURN TUBE		*		1.00
7	11371358	OIL FELT ASM.		*		1.00
8	B3538112000	OIL RETURN TUBE HOLDER				1.00
9	SS4120615SP	SCREW 3/16-28 L=6				1.00
10	22924906	OIL REGULATOR SCREW SPRING				1.00
11	11307352	OIL WICK ASM.				1.00
12	22923056	OIL PUMP ASM.				1.00
13	22923312	OIL PUMP INSTALLING BASE		*		1.00
14	22923015	OIL PUMP		*		1.00
15	22923700	IMPELLER		*		1.00
16	SE4301041SR	SCREW D=3 L=10		*		3.00
17	22923205	PUMP BODY COVER		*		1.00
18	22923809	PUMP BODY SUPPORT PLATE		*		1.00
19	22923403	PLUNGER		*		1.00
20	22923601	PLUNGER SPRING		*		1.00
21	22923502	PLUNGER SCREW		*		1.00
22	22923908	HOOK DRIVING SHAFT OILING PIPE		*		1.00
23	SL4030851SF	SCREW M3 L=8		*		3.00
24	SS6111010TP	SCREW 11/64-40 L=9.5				1.00
25	SS4150915SP	SCREW 15/64-28 L=9				1.00
26	22924005	PUMP BODY STRUT	FOR DMN-5420N-7-00			1.00
27	11231503	OIL PUMP SUPPORT	FOR DMN-5420N-7-0B,-WB			1.00
28	22924609	RUBBER JOINT				1.00
29	11221504	OIL TUBE JOINT				1.00
30	11222007	HOLDER				1.00
31	SS6080340SP	SCREW 1/8-44 L=2.9				1.00
32	SQ1150501SD	CONNECTING SCREW				1.00
33	CQ252000000	OIL WICK				0.30
34	11356201	OIL FELT PRESSER				1.00
35	B3404122000	SPRING				1.00
36	22925002	OIL REGULATOR SCREW				1.00
37	WS0651310KP	SPRING WASHER 6.5X11X1.3	FOR DMN-5420N-7-0B,-WB			1.00
38	WS0451040KP	SPRING WASHER 4.5X8.5X1	FOR DMN-5420N-7-0B,-WB			1.00

# OIL RESERVOIR COMPONENTS



No.	品番	品名	備考	子部品	消耗品	個数
1	11360757	OIL RESERVOIR ASM.				1.00
2	11360708	OIL RESERVOIR		*		1.00
3	11023108	GASKET		*		1.00
4	11047107	RUBBER CUSHION		*		4.00
5	SS6700710SH	SCREW 5/16-24 L=7		*		1.00
6	RO098240100	RUBBER RING		*		1.00
7	22932156	KNEE LIFTER ROTATION ARM ASM.		*		1.00
8	22932107	KNEE LIFTER ROTATION ARM		*		1.00
9	NM6060001SE	NUT M6		*		2.00
10	SM8063012TR	SCREW M6 L=30		*		2.00
11	22932206	SPRING		*		1.00
12	RE1000000K0	E-RING 10		*		1.00
13	22932453	BRACKET ASM.		*		1.00
14	22932404	BRACKET		*		1.00
15	22934707	BRACKET SCREW		*		2.00
16	40101720	SCREW_M6		*		1.00
17	22932305	KNEE PRESS CROSS SHAFT		*		1.00
18	NM6060001SE	NUT M6		*		1.00
19	22934251	KNEE PAD PLATE ASM.				1.00
20	22934608	KNEE PAD UPRIGHT SHAFT		*		1.00
21	22934400	KNEE PAD PLATE RUBBER		*		1.00
22	22934202	KNEE PAD PLATE		*		1.00
23	22934301	KNEE PAD PLATE SUPPORT		*		1.00
24	SM9061203SE	SCREW M6 L=12		*		1.00
25	22934509	KNEE PAD PLATE COVER		*		1.00
26	40064815	WASTE MATERIAL CHUTE HOLDER				1.00
27	SK3412000SC	WOOD SCREW D=4.1 L=20				3.00
28	SS7091110TP	SCREW 9/64-40 L=10.5				3.00
29	NS6090310SP	NUT 9/64-40				3.00
30	SS4110715SP	SCREW 11/64-40 L=7				2.00
31	40056521	WASTE MATERIAL CHUTE HOLDER ASM.				1.00
32	40053719	CLOTH WASTE CHUTE UPPER		*		1.00
33	12341806	CLOTH WASTE CHUTE		*		1.00
34	22931703	KNEE LIFTER PUSH ROD				1.00
35	B8228125000	OIL RESERVOIR MAGNET				1.00
36	11361003	OIL PUSH GUIDE				1.00

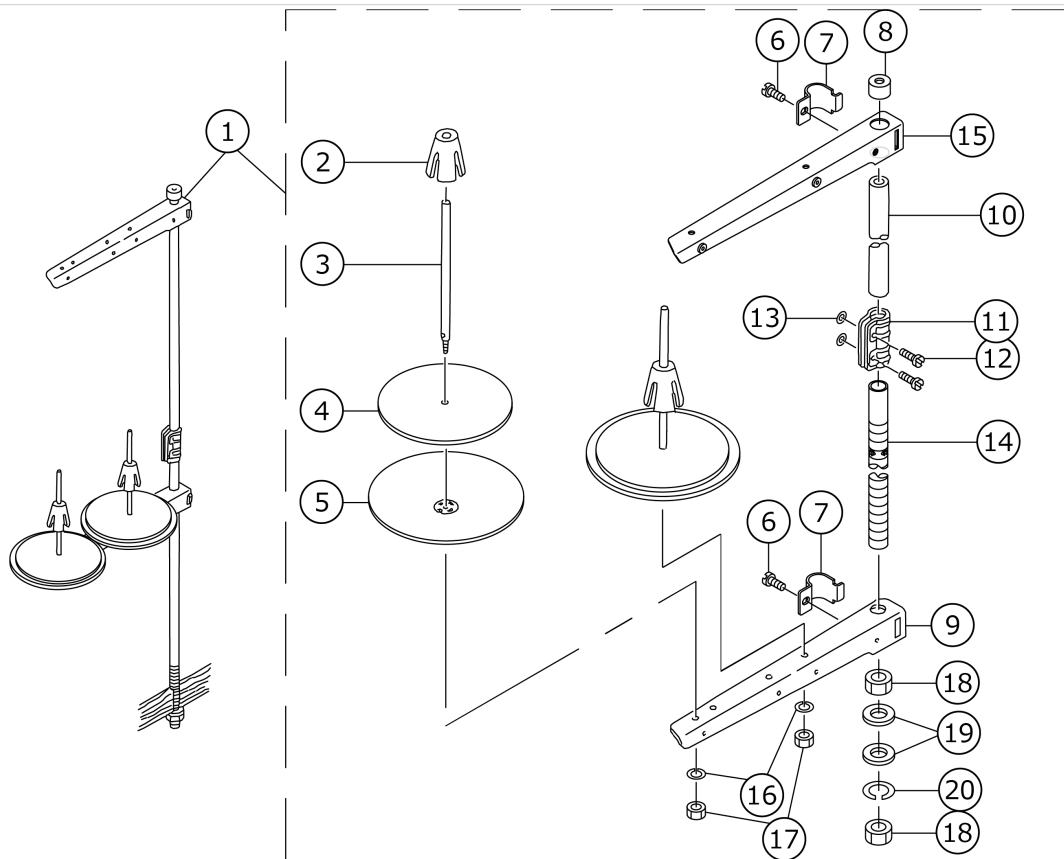
# BELT COVER & BOBBIN WINDER COMPONENTS



No.	品番	品名	備考	子部品	消耗品	個数
1	22933451	BELT COVER ASM.				1.00
2	22933402	BELT COVER A		*		1.00
3	22933501	BELT COVER A CAP		*		1.00
4	22933659	BELT COVER B COMPL.		*		1.00
5	22933600	BELT COVER B		*		1.00
6	22933758	BELT COVER B LID ASM.		*		1.00
7	22933907	BELT COVER STRUT		*		1.00
8	22934004	SET SCREW		*		2.00
9	SS4121415SP	SCREW 3/16-28 L=14		*		1.00
10	WP0501016SD	WASHER 5X10.5X1		*		1.00
11	SK3412000SC	WOOD SCREW D=4.1 L=20		*		2.00
12	WP0450826SC	WASHER 4.5X10X0.8		*		2.00
13	22927354	BOBBIN WINDER COMPL.				1.00
14	22928501	THREAD TENSION POST BASE		*		1.00
15	SS4110515SP	SCREW 11/64-40 L=5		*		1.00
16	22928907	THREAD TENSION DISK		*		2.00
17	22929004	THREAD TENSION SPRING		*		1.00
18	22928808	NUT		*		1.00
19	SS7110350SP	SCREW 11/64-40 L=3.5		*		1.00
20	22928402	CONTROL RUBBER HOLDING PLATE		*		1.00
21	22928303	CONTROL RUBBER		*		1.00
22	22928105	BOBBIN PRESSER		*		1.00
23	SD0490261SP	HINGE SCREW D=4.9 H=2.6		*		1.00
24	SS7081310SP	SCREW 1/8-44 L=12.5		*		1.00
25	SS8110510SP	SCREW 11/64-40 L=5		*		1.00
26	22928709	THREAD TENSION POST		*		1.00
27	22927305	BOBBIN WINDER BASE		*		1.00
28	22927404	BOBBIN WINDER		*		1.00
29	22927602	BOBBIN WINDER SPINDLE		*		1.00
30	WP0450826SC	WASHER 4.5X10X0.8				2.00
31	SK3412000SC	WOOD SCREW D=4.1 L=20				2.00








# THREAD STAND COMPONENTS



No.	品番	品名	備考	子部品	消耗品	個数
1	22930358	THREAD STAND ASM.				1.00
2	22931109	SPOOL RETAINER		*		2.00
3	22931000	SPOOL PIN		*		2.00
4	22930903	SPOOL REST CUSHION		*		2.00
5	22930804	SPOOL REST		*		2.00
6	SM6061610SC	SCREW M6 L=16		*		2.00
7	22930705	THREAD GUIDE ARM JOINT		*		2.00
8	22931406	SPOOL REST ROD RUBBER CAP		*		1.00
9	22930507	SPOOL REST ARM		*		1.00
10	22930408	SPOOL REST ROD UPPER		*		1.00
11	22931307	SPOOL REST ROD JOINT		*		1.00
12	SM4051405SE	SCREW M5 L=14		*		2.00
13	NM6050001SE	NUT M5		*		2.00
14	22930309	SPOOL REST ROD LOWER		*		1.00
15	22930556	THREAD STANDING ARM ASM.		*		1.00
16	WS0510002KN	SPRING WASHER		*		2.00
17	NM6050001SE	NUT M5		*		2.00
18	NM6160511SE	NUT M16X1.5		*		2.00
19	WP1612616SE	WASHER 16.1X30X2.6		*		2.00
20	WS1643202KR	SPRING WASHER		*		1.00

# TABLE OF EXCHANGING GAUGE PARTS (1)

Specifications of the sub-gauge	Gauge width	1 Throat plate 針板		2 Throat plate cover (asm) accessory 針板蓋(組) *付属品		3 Gauge ゲージ		4 Throat plate chip guard 針板布屑カバー		5 Throat plate chip guard accessory 針板布屑ガイド *付属品		Type 仕様	Note 備考
		Ref.no	Part no	Ref.no	Part no	Ref.no	Part no	Ref.no	Part no	Ref.no	Part no		
サブゲージ仕様	サブゲージ巾												
CA□	5/64" (2.0mm)	①	11346004	⑭	B11155310AD	⑳	B1190530C0A	㉔	11346905	㉙	11347002	Spare parts type 通用パーツ仕様	Operate your sewing machine with the stitch length set to 2mm or less. (Cut-after type) 送りレサ2mm以下(後メスタイプ)
D□	1/8" (3.2mm)	②	11346004	⑮	B11155300AD	㉑	B1190530D00	㉕	11346905	㉚	11347002	Standard type 標準仕様	
DA□	7/64" (2.8mm)	③	11346004	⑯	B11155300AD	㉒	B1190530D0A	㉖	11346905	㉛	11347002	Spare parts type 通用パーツ仕様	
DC□	1/8" (3.2mm)	④	11346004	⑰	B11155300AD	㉓	B1190530D0C	㉗	11346905	㉜	11347002	Spare parts type 通用パーツ仕様	Gauge of chain-off thread 空送りゲージ
DD□	1/8" (3.2mm)	⑤	11346004	⑱	B11155300AD	㉔	B1190530D0B	㉘	11346905	㉝	11347002	Spare parts type 通用パーツ仕様	B11100120AA(B111001200A) Exclusive slide plate 滑り板
E□	5/32" (4.0mm)	⑥	11346004	⑲	B11155300AF	㉕	B1190530E00	㉙	11346905	㉞	11347002	Special type 特別仕様	
F□	3/16" (4.8mm)	⑦	11346004	⑳	B11155300AF	㉖	B1190530F00	㉚	11346905	㉟	11347002	Special type 特別仕様	
G□	7/32" (5.6mm)	⑧	11346004	㉑	B11155300AF	㉗	B1190530G00	㉜	11347101	㊱	11347200	Special type 特別仕様	
H□	1/4" (6.4mm)	⑨	11346103	㉒	B11155300AF	㉘	B1190530H00	㉝	11347101	㊲	11347200	Special type 特別仕様	
J□	9/32" (7.1mm)	⑩	11346103	㉓	B11155300AF	㉙	B1190530I00	㉞	11347101	㊳	11347200	Spare parts type 通用パーツ仕様	
JA□	19/64" (7.5mm)	⑪	11346103	㉔	B11155300AF	㉚	B1190530J0A	㉟	11347101	㊴	11347200	Spare parts type 通用パーツ仕様	
K□	5/16" (8.0mm)	⑫	11346103	㉕	B11155300AF	㉛	B1190530K00	㊱	11347309	㊵	11347408	Spare parts type 通用パーツ仕様	
M□	3/8" (9.5mm)	⑬	11346103	㉖	B11155300AM	㉜	B1190530M00	㊲	11347309	㊶	11347408	Special type 特別仕様	

[Note] 1. Enter A(standard feed type) or B(coarse feed type) in the box(□) shown in the column for sub-gauge type.

[注記] 1.サブゲージ仕様名の欄の□内は A→標準送りタイプ B→粗目送りタイプ

No.	品番	品名	備考	子部品	消耗品	個数
1	11346004	NEEDLE PLATE A				1.00
2	11346004	NEEDLE PLATE A				1.00
3	11346004	NEEDLE PLATE A				1.00
4	11346004	NEEDLE PLATE A				1.00
5	11346004	NEEDLE PLATE A				1.00
6	11346004	NEEDLE PLATE A				1.00
7	11346004	NEEDLE PLATE A				1.00
8	11346004	NEEDLE PLATE A				1.00
9	11346103	THROAT PLATE				1.00
10	11346103	THROAT PLATE				1.00
11	11346103	THROAT PLATE				1.00
12	11346103	THROAT PLATE				1.00
13	11346103	THROAT PLATE				1.00
14	B11155300AD	THROAT PLATE COVER				1.00
15	B11155300AD	THROAT PLATE COVER				1.00
16	B11155300AD	THROAT PLATE COVER				1.00
17	B11155300AD	THROAT PLATE COVER				1.00
18	B11155300AD	THROAT PLATE COVER				1.00
19	B11155300AF	THROAT PLATE OPEN COVER				1.00
20	B11155300AF	THROAT PLATE OPEN COVER				1.00
21	B11155300AF	THROAT PLATE OPEN COVER				1.00
22	B11155300AF	THROAT PLATE OPEN COVER				1.00
23	B11155300AF	THROAT PLATE OPEN COVER				1.00
24	B11155300AF	THROAT PLATE OPEN COVER				1.00
25	B11155300AF	THROAT PLATE OPEN COVER				1.00
26	B11155300AM	THROAT PLATE PLUG ASM. M				1.00
27	B1190530C0A	GAUGE PLATE CA				1.00
28	B1190530D00	GAUGE DD				1.00
29	B1190530D0A	GAUGE 7/64				1.00
30	B1190530D0C	GAUGE 1/8 DC				1.00
31	B1190530D0B	GAUGE 1/8 DB				1.00
32	B1190530E00	GAUGE PLATE 5/32 E				1.00
33	B1190530F00	GAUGE PLATE 3/16 F				1.00
34	B1190530G00	GAUGE PLATE 7/32 G				1.00
35	B1190530H00	GAUGE PLATE 1/4 H				1.00
36	B1190530J00	GAUGE PLATE 9/32				1.00
37	B1190530J0A	GAUGE PLATE 19/64				1.00
38	B1190530K00	THROAT PLATE 5/16				1.00
39	B1190530M00	THROAT PLATE 3/8				1.00
40	11346905	WASTE MATERIAL GUARD E				1.00
41	11346905	WASTE MATERIAL GUARD E				1.00
42	11346905	WASTE MATERIAL GUARD E				1.00
43	11346905	WASTE MATERIAL GUARD E				1.00
44	11346905	WASTE MATERIAL GUARD E				1.00
45	11346905	WASTE MATERIAL GUARD E				1.00
46	11346905	WASTE MATERIAL GUARD E				1.00
47	11347101	WASTE MATERIAL GUARD G				1.00
48	11347101	WASTE MATERIAL GUARD G				1.00
49	11347101	WASTE MATERIAL GUARD G				1.00
50	11347101	WASTE MATERIAL GUARD G				1.00

51	11347309	WASTE MATERIAL GUARD K				1.00
52	11347309	WASTE MATERIAL GUARD K				1.00
53	11347002	WASTE MATERIAL GUARD E				1.00
54	11347002	WASTE MATERIAL GUARD E				1.00
55	11347002	WASTE MATERIAL GUARD E				1.00
56	11347002	WASTE MATERIAL GUARD E				1.00
57	11347002	WASTE MATERIAL GUARD E				1.00
58	11347002	WASTE MATERIAL GUARD E				1.00
59	11347002	WASTE MATERIAL GUARD E				1.00
60	11347200	WASTE MATERIAL GUARD G				1.00
61	11347200	WASTE MATERIAL GUARD G				1.00
62	11347200	WASTE MATERIAL GUARD G				1.00
63	11347200	WASTE MATERIAL GUARD G				1.00
64	11347408	WASTE MATERIAL GUARD K				1.00
65	11347408	WASTE MATERIAL GUARD K				1.00

# TABLE OF EXCHANGING GAUGE PARTS (2)

Specifications of the sub-gauge	Gauge width	1		2		3				4		Type	Note		
		Chip guard 布屑ガイド		Hinging presser (asm) 自由押え(組)		Feed dog 送り歯				Knife メス					
		Ref.no	Part no	Ref.no	Part no	A		B		Ref.no	Part no				
サブ ゲージ 仕様	サブ ゲージ巾														
		CA□	5/64" (2.0mm)	①	11346400	⑭	B1524530CB0	⑳	B1613530C0A			⑤①	B4145530C00	Spare parts type 補用パーツ仕様	Operate your sewing machine with the stitch length set to 2mm or less.(Cut-after type) 送りび*が2mm以下(後メスタイプ)
		D□	1/8" (3.2mm)	②	11346400	⑮	B1524530DB0	㉔	B1609530D00	④①	B1609530E00	⑤②	B4121522000 B4145530B0A (E4145530B00)	Standard type 標準仕様	
		DA□	7/64" (2.8mm)	③	11346400	⑯	B1524530DB0	㉔	B1609530D00	④①	B1609530E00	⑤③	B4121522000 B4145530B0A (E4145530B00)	Spare parts type 補用パーツ仕様	
		DC□	1/8" (3.2mm)	④	11346400	⑰	B1524530DB0	⑳	B1609530D0E			⑤④	B4121522000 B4145530B0A (E4145530B00)	Spare parts type 補用パーツ仕様	Gauge of chain-off thread 空環用か*~シ*
		DD□	1/8" (3.2mm)	⑤	11346400	⑱	B1524530DBA	㉔	B1609530J00			⑤⑤	B4121522000 B4145530B0A (E4145530B00)	Spare parts type 補用パーツ仕様	B11100120AA(B111001200A) Exclusive slide plate 滑り板
		E□	5/32" (4.0mm)	⑥	11346400	⑲	B1524530EB0	㉔	B1609530D00	④②	B1609530E00	⑤⑥	B4121522000 B4145530B0A (E4145530B00)	Special type 特別仕様	
		F□	3/16" (4.8mm)	⑦	11346400	⑳	B1524530EB0	㉔	B1609530D00	④③	B1609530E00	⑤⑦	B4121522000 B4145530B0A (E4145530B00)	Special type 特別仕様	
		G□	7/32" (5.6mm)	⑧	11346400	㉑	B1524530GB0	㉔	B1609530G00	④④	B1609530H00	⑤⑧	B4121522000 B4145530B0A (E4145530B00)	Special type 特別仕様	
		H□	1/4" (6.4mm)	⑨	11346509	㉒	B1524530GB0	㉔	B1609530G00	④⑤	B1609530H00	⑤⑨	B4121522000 B4145530B0A (E4145530B00)	Spare parts type 補用パーツ仕様	
		J□	9/32" (7.1mm)	⑩	11346509	㉓	B1524530GB0	㉔	B1609530G00	④⑥	B1609530H00	⑥①	B4121522000 B4145530B0A (E4145530B00)	Spare parts type 補用パーツ仕様	
		JA□	19/64" (7.5mm)	⑪	11346509	㉔	B1524530GB0	㉔	B1609530G00	④⑦	B1609530H00	⑥②	B4121522000 B4145530B0A (E4145530B00)	Spare parts type 補用パーツ仕様	
		K□	5/16" (8.0mm)	⑫	11346509	㉕	B1524530GB0	㉔	B1609530G00	④⑧	B1609530H00	⑥③	B4121522000 B4145530B0A (E4145530B00)	Spare parts type 補用パーツ仕様	
M□	3/8" (9.5mm)	⑬	11346509	㉖	B1524530GB0	㉔	B1609530G00	④⑨	B1609530H00	⑥④	B4121522000 B4145530B0A (E4145530B00)	Special type 特別仕様			

[Note] 1. Enter A(standard feed type) or B(coarse feed type) in the box(□) shown in the column for sub-gauge types.  
2. For the classification of knives in terms of specification  
-B4121522000 . . . . . For Japan  
B4145530B0A . . . . . For export  
B4145530B00 . . . . . Accessory for the machine for Japan  
(cutting width is 2.4mm or more)  
B4145530C00 . . . . . For the cutting width of 2.3mm or less  
(including accessories)

[注記] 1. サブゲージ仕様名の欄の□内は A→標準送りタイプ B→粗目送りタイプ  
2. メスの仕様区分は→B4121522000 . . . . . 日本用  
B4145530B0A . . . . . 輸出用  
B4145530B00 . . . . . 日本付属用(切り寸2.4mm以上)  
B4145530C00 . . . . . 切り寸2.3mm以下用(付属品)

B→粗目送りタイプ

No.	品番	品名	備考	子部品	消耗品	個数
1	11346400	WASTE MATERIAL GUIDE				1.00
2	11346400	WASTE MATERIAL GUIDE				1.00
3	11346400	WASTE MATERIAL GUIDE				1.00
4	11346400	WASTE MATERIAL GUIDE				1.00
5	11346400	WASTE MATERIAL GUIDE				1.00
6	11346400	WASTE MATERIAL GUIDE				1.00
7	11346400	WASTE MATERIAL GUIDE				1.00
8	11346400	WASTE MATERIAL GUIDE				1.00
9	11346509	WASTE MATERIAL GUIDE C				1.00
10	11346509	WASTE MATERIAL GUIDE C				1.00
11	11346509	WASTE MATERIAL GUIDE C				1.00
12	11346509	WASTE MATERIAL GUIDE C				1.00
13	11346509	WASTE MATERIAL GUIDE C				1.00
14	B1524530CB0	PRESSER FOOT ASM.				1.00
15	B1524530DB0	PRESSER FOOT ASM.				1.00
16	B1524530DB0	PRESSER FOOT ASM.				1.00
17	B1524530DB0	PRESSER FOOT ASM.				1.00
18	B1524530DBA	PRESSER DA WITH FINGER GUARD				1.00
19	B1524530EB0	PRESSER FOOT ASM. E				1.00
20	B1524530EB0	PRESSER FOOT ASM. E				1.00
21	B1524530GB0	PRESSER FOOT ASM G WITH GUARD				1.00
22	B1524530GB0	PRESSER FOOT ASM G WITH GUARD				1.00
23	B1524530GB0	PRESSER FOOT ASM G WITH GUARD				1.00
24	B1524530GB0	PRESSER FOOT ASM G WITH GUARD				1.00
25	B1524530GB0	PRESSER FOOT ASM G WITH GUARD				1.00
26	B1524530GB0	PRESSER FOOT ASM G WITH GUARD				1.00
27	B1609530C0A	FEED DOG CA				1.00
28	B1609530D00	FEED DOG D				1.00
29	B1609530D00	FEED DOG D				1.00
30	B1609530D0E	FEED DOG DE				1.00
31	B1609530J00	FEED DOG J				1.00
32	B1609530D00	FEED DOG D				1.00
33	B1609530D00	FEED DOG D				1.00
34	B1609530G00	FEED DOG G				1.00
35	B1609530G00	FEED DOG G				1.00
36	B1609530G00	FEED DOG G				1.00
37	B1609530G00	FEED DOG G				1.00
38	B1609530G00	FEED DOG G				1.00
39	B1609530G00	FEED DOG G				1.00
40	B1609530E00	FEED DOG E				1.00
41	B1609530E00	FEED DOG E				1.00
42	B1609530E00	FEED DOG E				1.00
43	B1609530E00	FEED DOG E				1.00
44	B1609530H00	FEED DOG H				1.00
45	B1609530H00	FEED DOG H				1.00
46	B1609530H00	FEED DOG H				1.00
47	B1609530H00	FEED DOG H				1.00
48	B1609530H00	FEED DOG H				1.00
49	B1609530H00	FEED DOG H				1.00
50	B4145530C00	KNIFE (C)				1.00

51	B4121522000	KNIFE				1.00
52	B4145530B0A	KNIFE				1.00
53	B4145530B00	CLOTH CUTTING KNIFE B				1.00
54	B4121522000	KNIFE				1.00
55	B4145530B0A	KNIFE				1.00
56	B4145530B00	CLOTH CUTTING KNIFE B				1.00
57	B4121522000	KNIFE				1.00
58	B4145530B0A	KNIFE				1.00
59	B4145530B00	CLOTH CUTTING KNIFE B				1.00
60	B4121522000	KNIFE				1.00
61	B4145530B0A	KNIFE				1.00
62	B4145530B00	CLOTH CUTTING KNIFE B				1.00
63	B4121522000	KNIFE				1.00
64	B4145530B0A	KNIFE				1.00
65	B4145530B00	CLOTH CUTTING KNIFE B				1.00
66	B4121522000	KNIFE				1.00
67	B4145530B0A	KNIFE				1.00
68	B4145530B00	CLOTH CUTTING KNIFE B				1.00
69	B4121522000	KNIFE				1.00
70	B4145530B0A	KNIFE				1.00
71	B4145530B00	CLOTH CUTTING KNIFE B				1.00
72	B4121522000	KNIFE				1.00
73	B4145530B0A	KNIFE				1.00
74	B4145530B00	CLOTH CUTTING KNIFE B				1.00
75	B4121522000	KNIFE				1.00
76	B4145530B0A	KNIFE				1.00
77	B4145530B00	CLOTH CUTTING KNIFE B				1.00
78	B4121522000	KNIFE				1.00
79	B4145530B0A	KNIFE				1.00
80	B4145530B00	CLOTH CUTTING KNIFE B				1.00
81	B4121522000	KNIFE				1.00
82	B4145530B0A	KNIFE				1.00
83	B4145530B00	CLOTH CUTTING KNIFE B				1.00
84	B4121522000	KNIFE				1.00
85	B4145530B0A	KNIFE				1.00
86	B4145530B00	CLOTH CUTTING KNIFE B				1.00



# LIST FOR INFORMATION OF CHANGE

As to the place changed, refer to the corresponding Rev.No.  
 When previous parts(Obsoleted part)and new parts(Added parts)are  
 not interchangeable with each other:  
 In this case, even obsoleted parts(D.)can be ordered with the  
 obsoleted part number, so select the parts with changed dates and  
 place your orders.

変更箇所は、該当Rev.No.版をご参照ください。

部品の互換性がない変更の場合は、削除された品番でも、ご注文できます。

29133709  
 No.0888-10・・・Rev.No.

\*A:Added parts追加部品/D:Obsoleted parts削除部品/E:Erratum訂正

* Rev. No.	Page 頁	Ref. No.	Parts No. 品番	* Rev. No.	Page 頁	Ref. No.	Parts No. 品番
D 09	2	19	111-00104	A 10	2	19	401-11022
D 09	2	67	M6004-350-AAC				
D 09	2	68	SS-4121215-SP				
D 09	2	69	WP-0501016-SD				
D 09	2	70	M6004-350-AAF				
D 09	2	71	M6004-350-AAA				
D 09	2	82	229-01904	A 10	2	81	114-15205
D 09	2	83	M6004-350-AAL				
				A 10	2	71	401-16677
D 09	4	4	110-39070	A 10	4	4	229-18072
D 09	4	5	110-39062	A 10	4	5	229-18064
D 09	4	6	B1905-541-B00	A 10	4	6	229-18403
				A 10	4	7	229-18502
				A 10	4	8	229-18601
				A 10	4	9	229-18700
D 09	4	7	110-05204	A 10	4	10	229-18106
D 09	4	8	B1408-552-000	A 10	4	11	229-06606
D 09	4	9	B1903-552-000	A 10	4	12	229-18304
D 09	4	11	113-70871	A 10	4	14	400-97024
D 09	4	16	113-70863	A 10	4	16	400-95787
D 09	4	17	113-71606				
D 09	4	18	B4107-522-000	A 10	4	18	PS-0400082-KP
D 09	4	19	113-49214	A 10	4	17	400-95788
D 09	4	44	110-02508	A 10	4	44	401-05231
				A 10	12	1	401-20641
				A 10	14	1	113-56953
D 09	14	21	SS-7090520-TP				
D 09	14	22	SS-7110830-SP				
D 09	14	25	113-57209				
D 09	18	10	112-33202	A 10	18	10	401-12705
D 09	18	11	HW-2003900-00				
D 09	18	12	HA-0060000-00	A 10	18	12	HA-0060000-0A
D 09	18	16	HW-5000700-00				
D 09	18	21	HK-0346400-0B				
D 09	22	6	RO-1082401-00	A 10	22	6	RO-0982401-00
D 09	22	16	SM-9062563-TR	A 10	22	16	401-01720

# HOW TO MAKE USE OF THIS PARTS LIST

## 1.Explanation of codes

1)"\*"mark.....means this part is changed from the previous parts book.

As to the details of the change, refer to the "List for information of change".

2)"#01".....refer to "Note" explanation at bottom of page.

## 2.Codes on the "Qty" column

· Each numeral indicates the number of parts required.

· "0.1" and "2.5" indicate the length (in meters) of the respective parts.

3.Parentheses mean that the corresponding part is a subpart that constructs an assembly part.

4.Dotted lines on the Figures indicate assembly parts.

## 1."注記"欄の記号説明

1) "\*"印.....前回のパーツブックに比較して今回変更された部品を意味します。

変更内容は、"変更情報リスト"を参照してください。

2) "#01".....ページ下の"注記"の説明を参照してください。

2.数量欄の数字は、個数を表し、0.1、2.5等の数値は、長さ（単位メートル）を表します。

3.数量欄の（ ）は、組部品を構成している子部品であることを意味します。

4.イラストページの-----枠は、組構成であることを意味します。